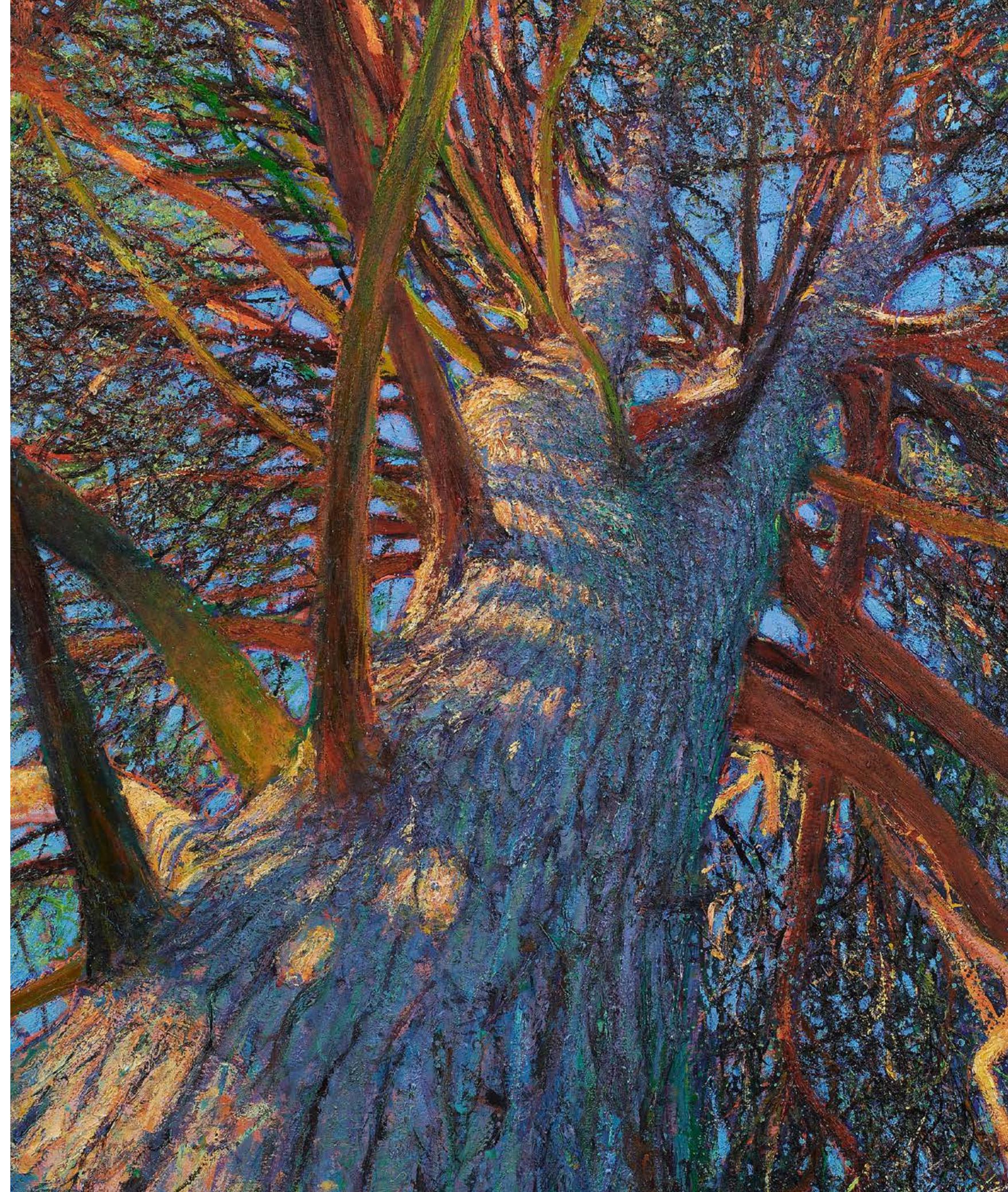


Andrew Gifford

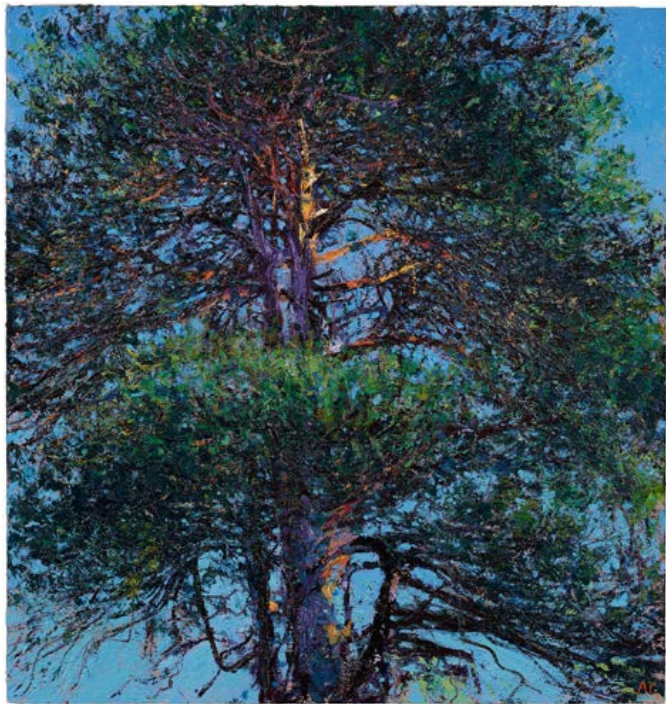
2022





Previous page:
Andrew Gifford in his studio with *Hawthorn*
in *Full Blossom*, Whorlton Castle, North Yorkshire

- 1 *Ancient Scots Pine Canopy I*, Glen Tanar Estate, 2022
Oil on canvas, 57 × 55 ins (145 × 140 cms)



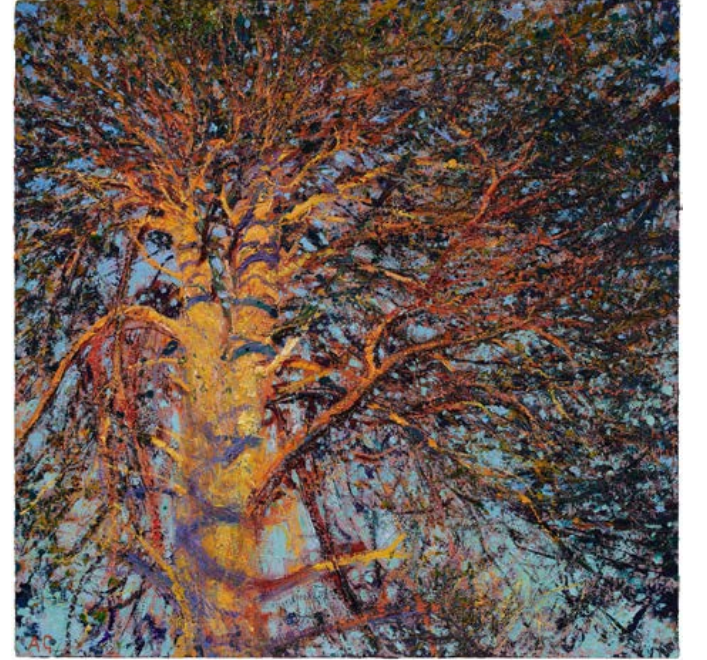
- 2 *Last Light on Scots Pine, Tornaveen, Aberdeenshire, 2022*
Oil on board, 12 ¼ × 12 ¼ ins (31 × 31 cms)
- 3 *Scots Pine Midday Winter Sun, Torphins, Aberdeenshire, 2022*
Oil on board, 14 ½ × 13 ¾ ins (37 × 35 cms)



- 4 *Into a Scots Pine Winter Sun, Torphins, Aberdeenshire, 2022*
Oil on board, 14 ½ × 13 ¾ ins (37 × 35 cms)



5 *Ancient Scots Pine Canopy II, Glen Tanar Estate, 2022*
Oil on canvas, 57 × 55 ins (145 × 140 cms)



6 *Last Light on Scots Pine near Torphins, Aberdeenshire, 2022*
Oil on board, 12 ¼ × 12 ¼ ins (31 × 31 cms)



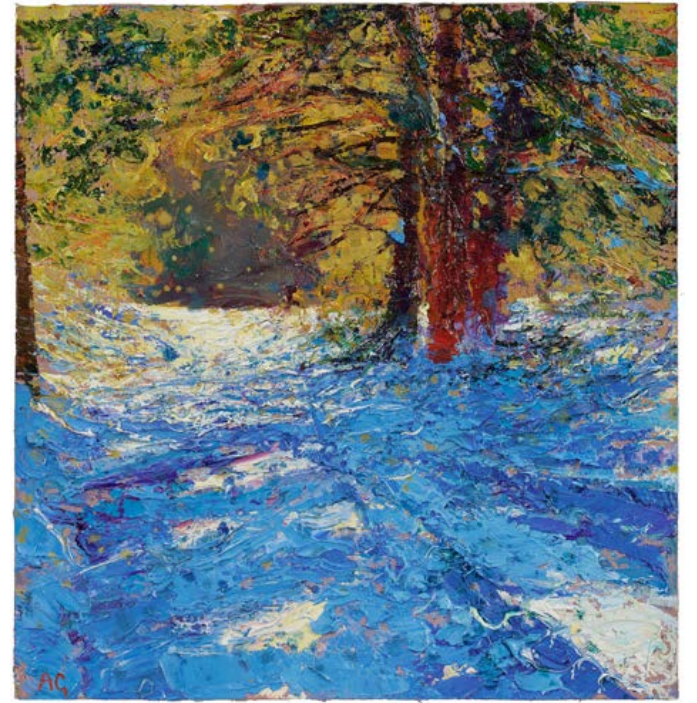
7 *Caledonian Forest near Loch Garten, Winter, 2022*
Oil on canvas, 54 ¼ × 104 ins (138 × 264 cms)



8 *Early Morning Light with Frost, Glen Tanar Estate I, 2022*
Oil on canvas, 52 ½ × 54 ins (133 × 137 cms)

9 *Early Morning Light with Frost, Glen Tanar Estate II, 2022*
(Detail) Oil on canvas, 52 ½ × 54 ins (133 × 137 cms)



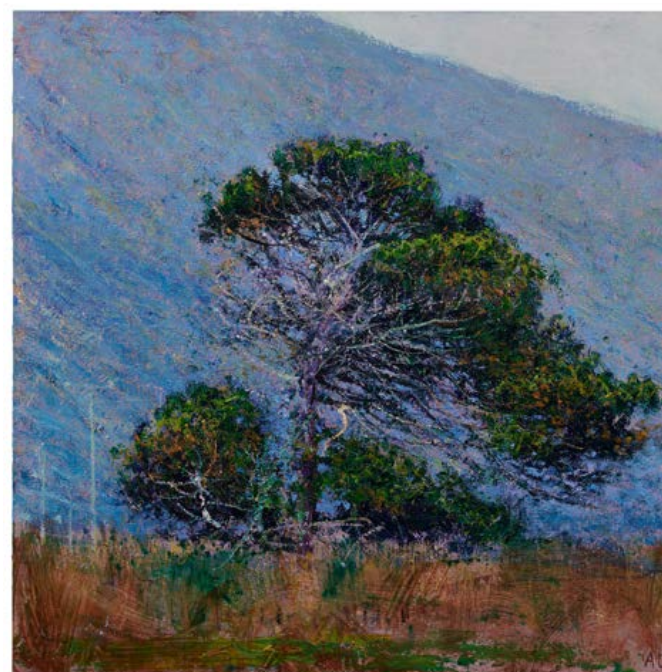
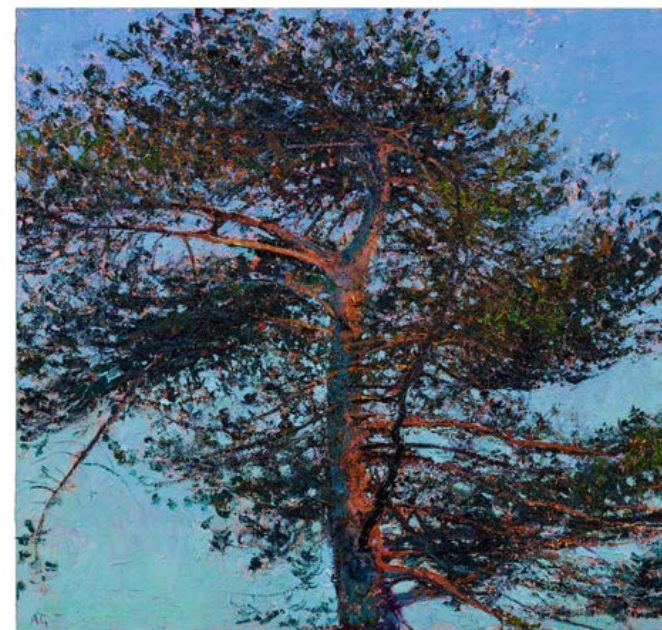
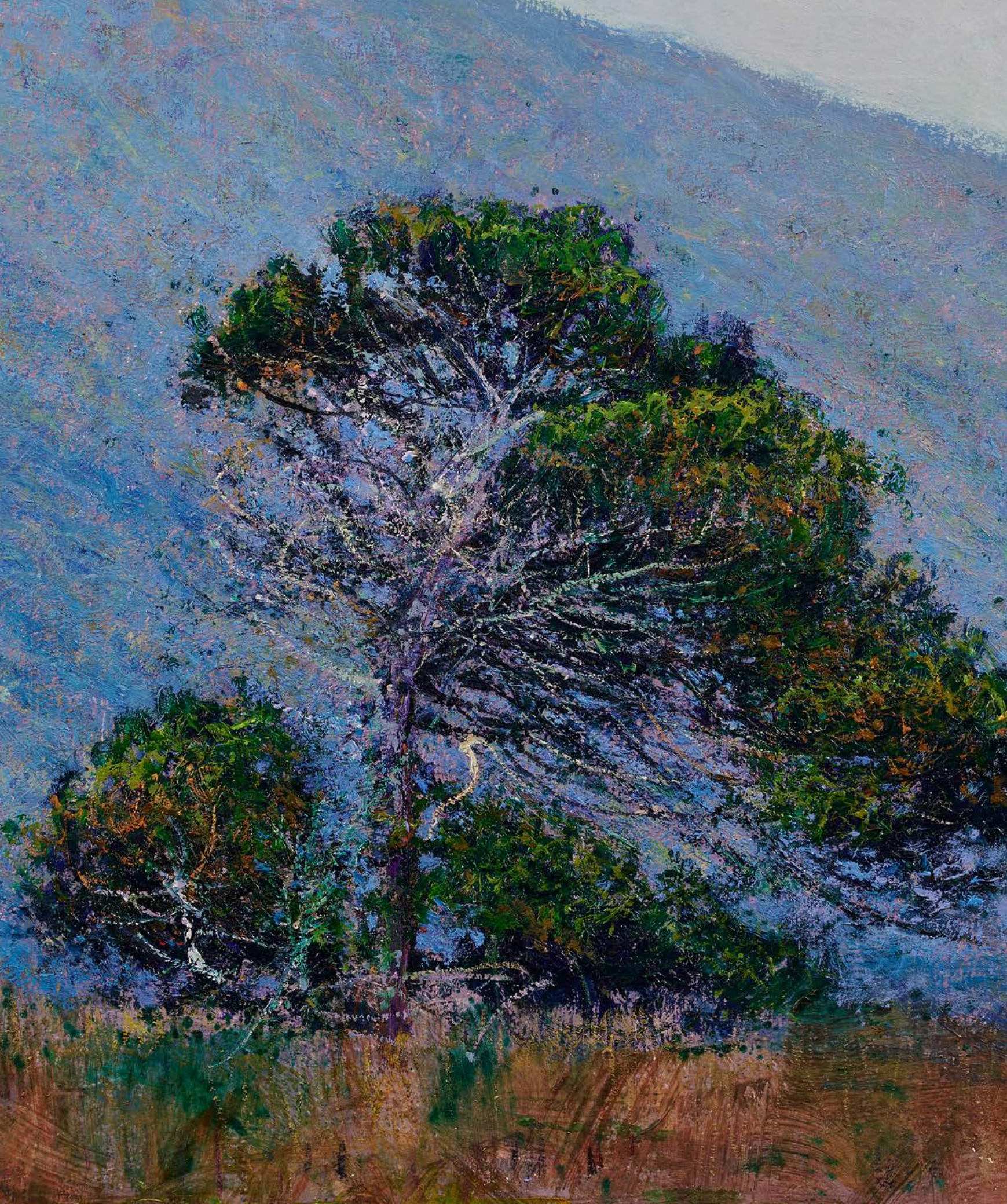


10 *Path through Scots Pines in the Snow, Glen Tanar, 2022*
Oil on board, 10 ¼ × 9 ¾ ins (26 × 25 cms)

11 *Damaged Old Scots Pine in the Snow, Glen Tanar, 2022*
Oil on board, 10 ¼ × 9 ¾ ins (26 × 25 cms)



12 *Pine in Last Light near Cahersiveen, Co Kerry, 2022*
Oil on canvas, 55 × 57 ins (140 × 145 cms)

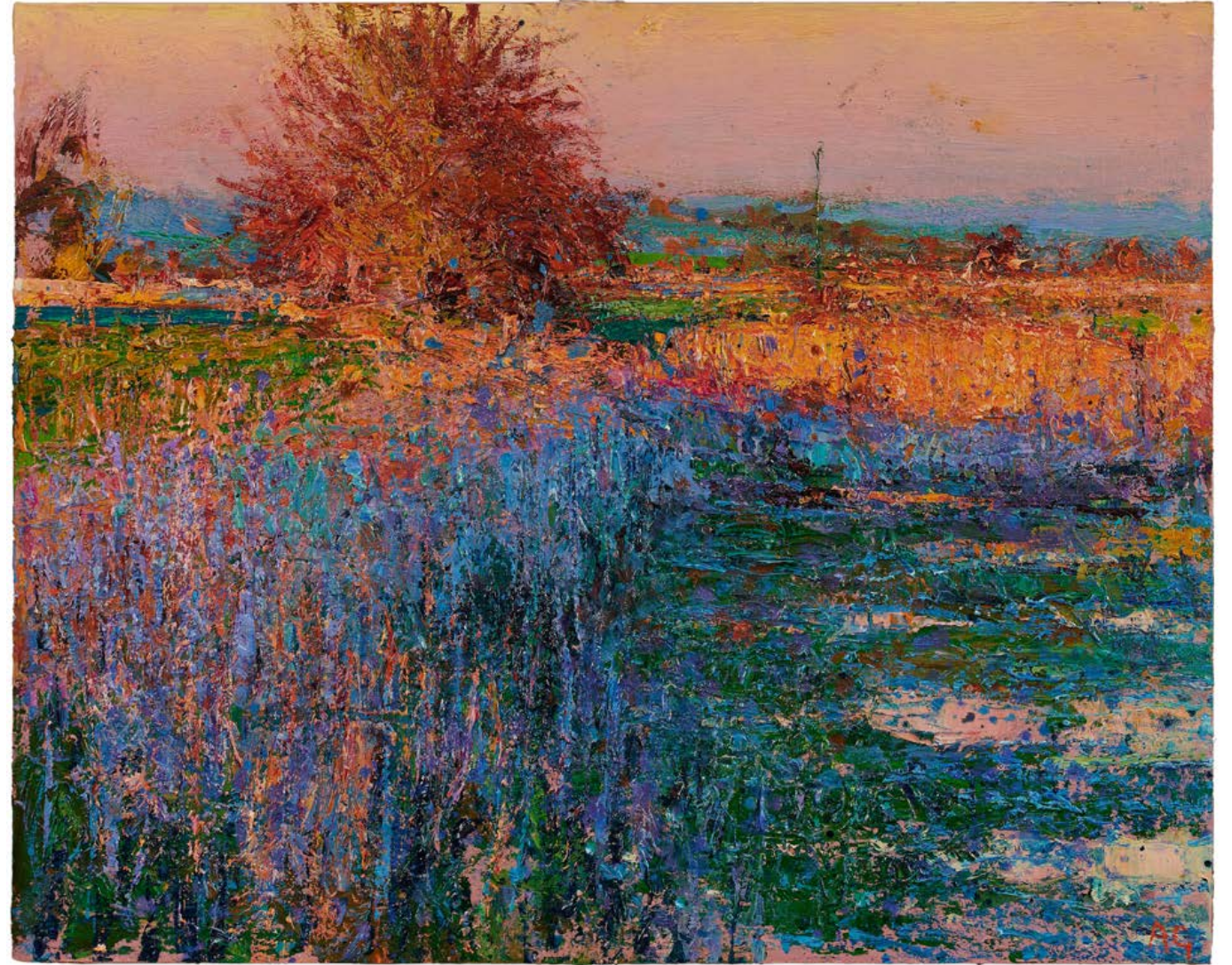


13 *The Old Pine at Churchill House Co Kerry, Ireland, 2022*
Oil on board, 12 × 15 ins (30 × 38 cms)

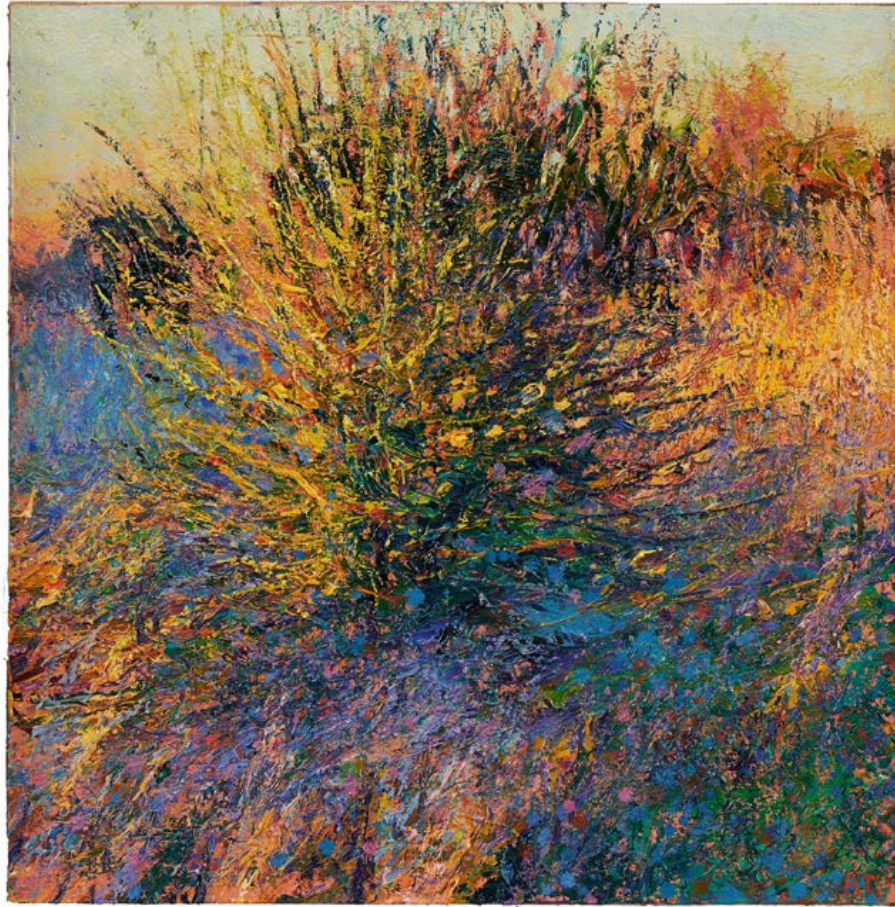
14 *Pine near St Finian's Bay Co Kerry, Ireland, 2022*
Oil on board, 12 ¼ × 12 ¼ ins (31 × 31 cms)



15 *Early January Frost, Wineham, Sussex, 2022*
Oil on board, 9 ½ × 10 ¼ ins (24 × 26 cms)



16 *Sunset on Pevensey Marshes, Sussex, 2022*
Oil on board, 9 × 11 ½ ins (23 × 29 cms)



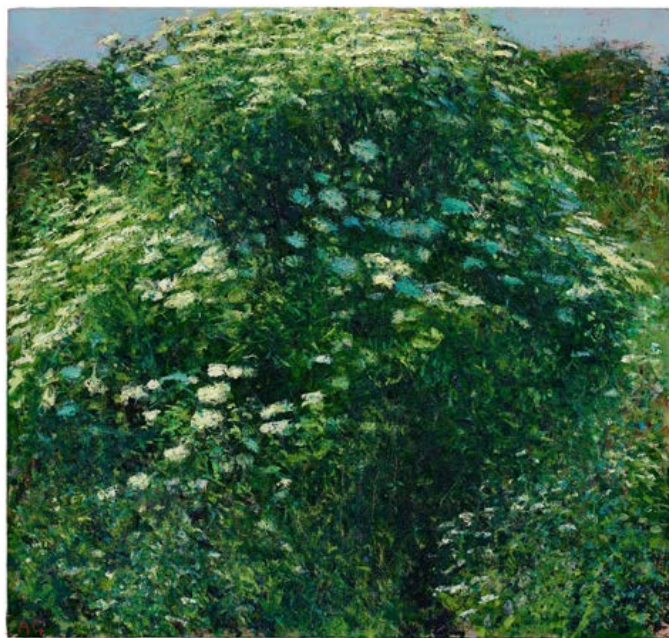
17 *Lone Hawthorn Last Winter Light, Pevensey, 2022*
Oil on board, 10 × 9 ¾ ins (25.5 × 25 cms)

18 *Scots Pine Morning Light, New Forest, 2022*
(Detail) Oil on board, 15 × 14 ¼ ins (38 × 36 cms)



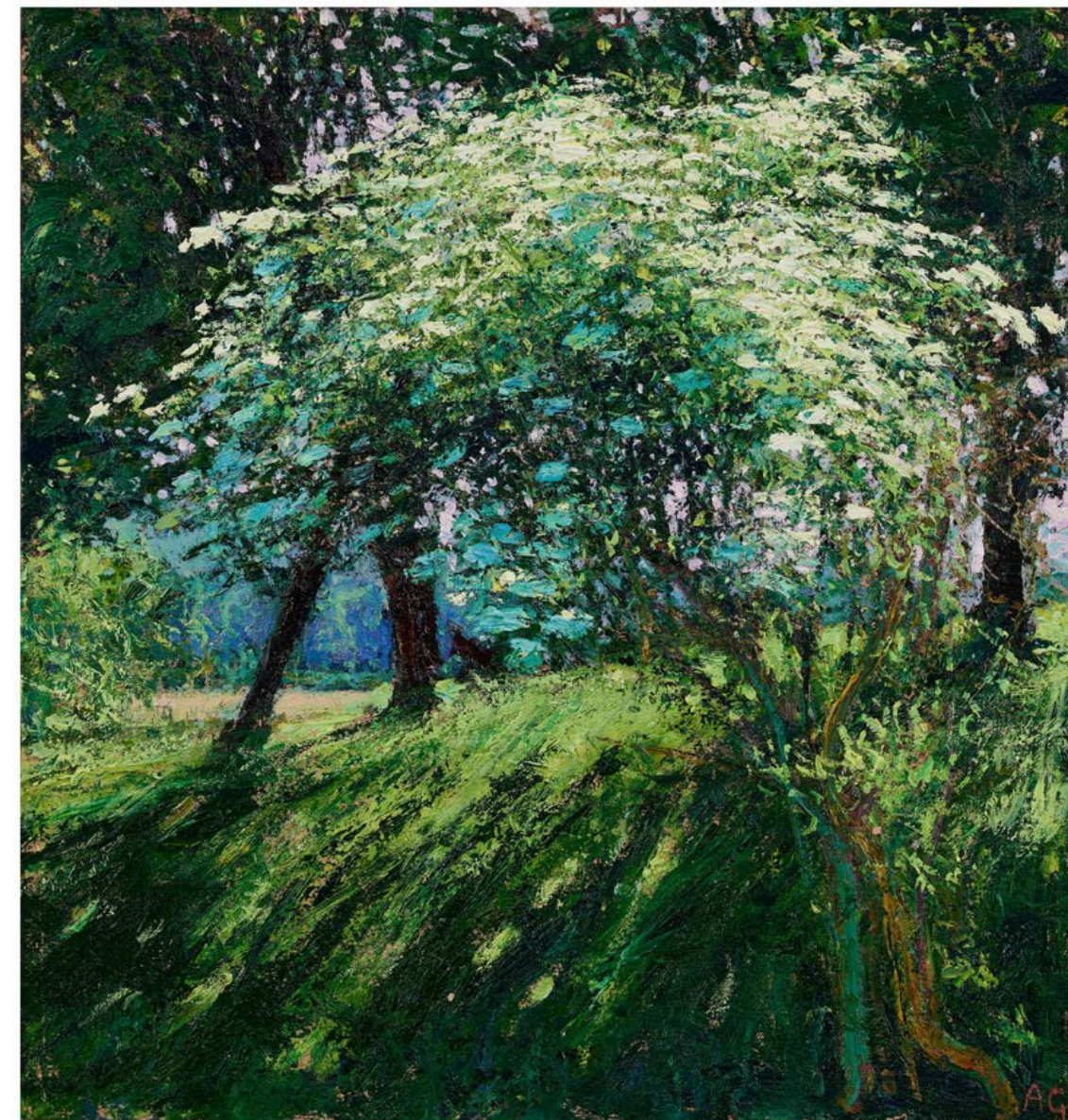


19 *Hawthorn in Full Blossom, Whorlton Castle, North Yorkshire, 2022*
(Diptych) Oil on canvas, 52 ¼ × 107 ¾ ins (132.5 × 274 cms)



20 *Elder in Sheepcote Valley I, Sussex, 2022*
Oil on board, 14 ¼ × 15 ins (36 × 38 cms)

21 *Elder in Sheepcote Valley III, Sussex, 2022*
Oil on board, 14 ¼ × 13 ¾ ins (36.5 × 35 cms)



22 *Elder in Full Bloom, Glynde, 2022*
Oil on board, 15 × 14 ¼ ins (38 × 36 cms)

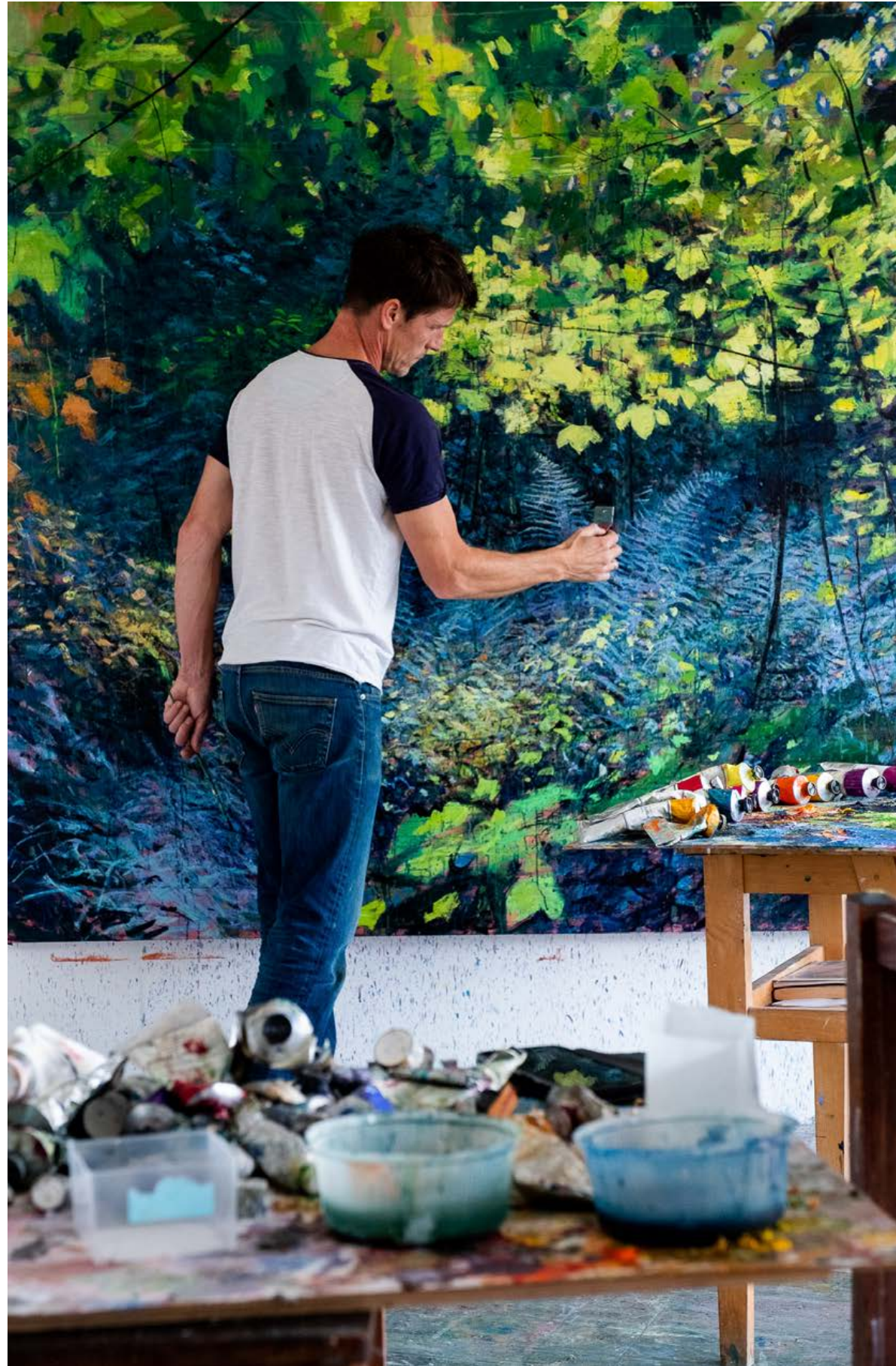


23 *Early Elderflower Sheepcote Valley, Sussex, 2022*
 Oil on canvas, 55 × 57 ins (140 × 145 cms)



24 *Hawthorn Full Blossom Near Battle, 2022*
 Oil on board, 13 ¾ × 14 ½ ins (35 × 37 cms)

25 *Elder in Sheepcote Valley, Cloudy Day, 2022*
 Oil on board, 13 ¾ × 14 ½ ins (35 × 37 cms)



Andrew Gifford in his studio, 2022
©Natasha Bidgood

Catalogue for the exhibition

Andrew Gifford, 2022

John Martin Gallery,

4 Cromwell Place, London, SW7 2JE

6 - 11 December 2022

Tuesday to Saturday 10am to 6pm

Sunday 10am to 4pm

Enquiries: Laura Selby, laura@jmlondon.com

John Martin Gallery

T +44 (0)20 7499 1314

info@jmlondon.com

www.jmlondon.com

Instagram and Facebook updates [@johnmartingallery](#)

Portrait photography by Natasha Bidgood

Design by Matilda de Lageneste

Print production by Roy Killen