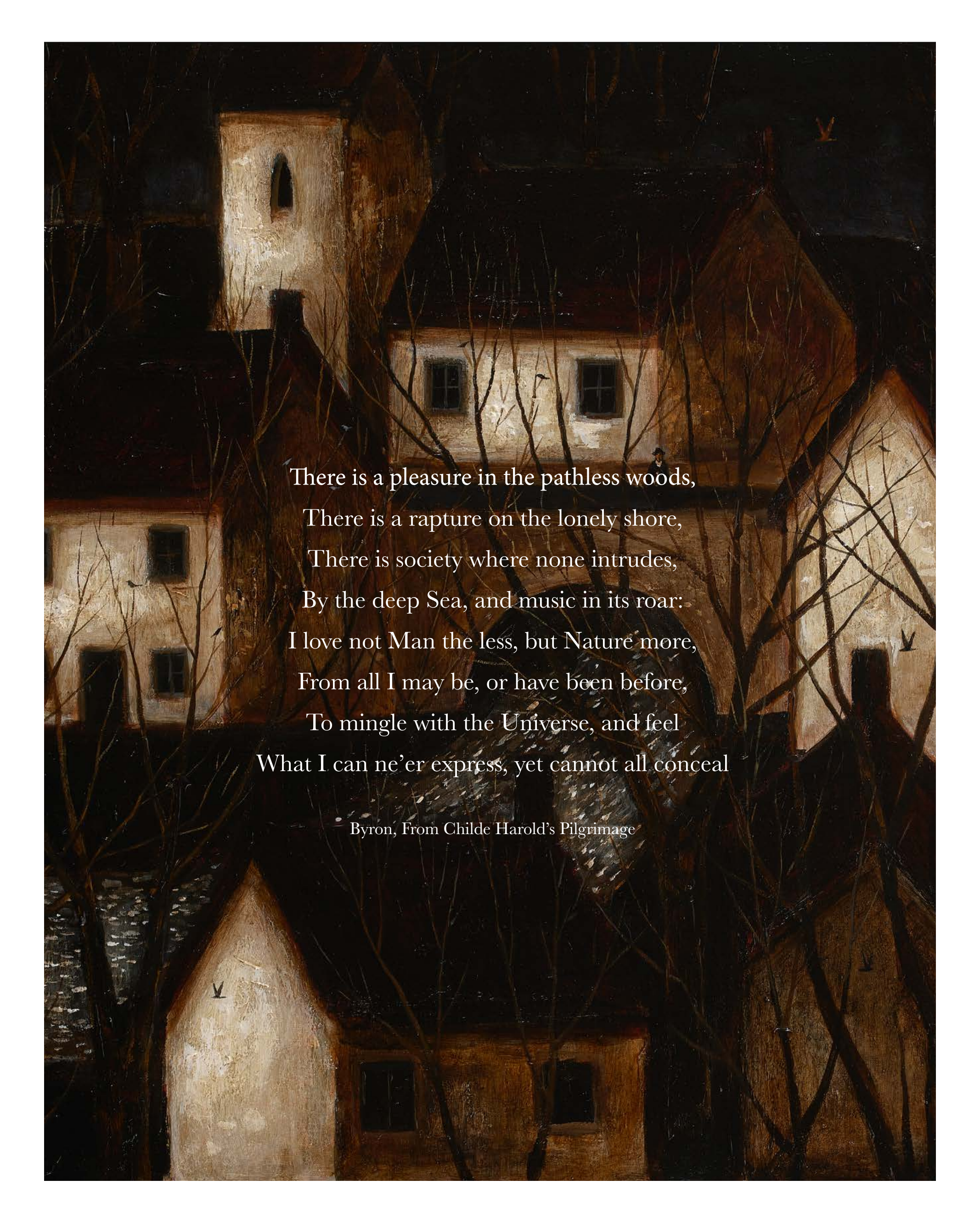




John Caple
In the Pathless Woods



There is a pleasure in the pathless woods,
There is a rapture on the lonely shore,
There is society where none intrudes,
By the deep Sea, and music in its roar:
I love not Man the less, but Nature more,
From all I may be, or have been before,
To mingle with the Universe, and feel
What I can ne'er express, yet cannot all conceal

Byron, From Childe Harold's Pilgrimage

John Caple
In the Pathless Woods

9th November – 10th December

John Martin Gallery
38 Albemarle Street
London W1S 4JG
+44 (0)20 7499 1314
www.jmlondon.com



Visit the Soul in Sleep I, 2021 (cat. 21)
acrylic on canvas
36 x 24 ins, 91.5 x 61 cms

The paintings in this exhibition are images suggested by lines from three poems, two by Percy Bysshe Shelley, *Ode to the West Wind* and *Mont Blanc*, and what has come to be known as ‘*There is Pleasure in the Pathless Woods*’, the one hundred-and-seventy-eighth verse of the much larger poem, *Childe Harold’s Pilgrimage*, by Byron.

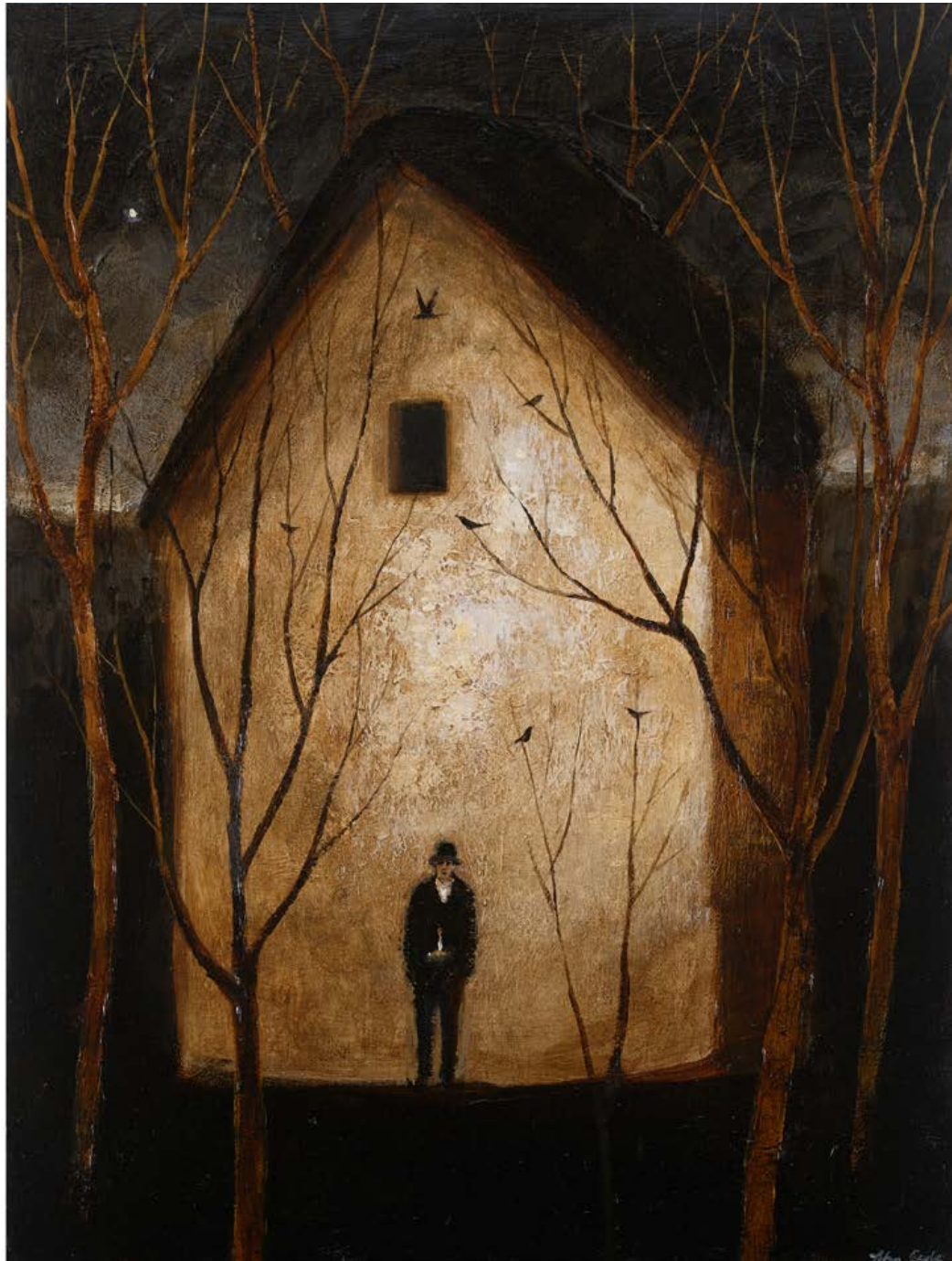
All three are concerned with finding meaning by looking at Nature. In the poems it is portrayed as wild, mysterious, benevolent and cruel, but also a refuge and teacher if approached in solitude, through the imagination or in a state of reverie. The feeling of isolation – that fear of being lost in the pathless woods – forces us to connect with the natural world, and so to ourselves.

When I started these paintings early in 2020 I had no idea how much these same themes would change in my mind and take on new meaning over the months ahead.

John Caple



The Sojourn, 2021 (cat. 2)
acrylic on canvas
24 x 36 ins, 61 x 91.5 cms



Dusk Wish, 2021 (cat. 18)
acrylic on linen on board
16 x 11¼ ins, 40 x 30 cms



In the Woods , 2021 (cat. 19)
acrylic on linen on board
11¾ x 15¾ ins, 30 x 40 cms



The Pathless Woods, 2021 (cat. 1)
acrylic on canvas
30 x 40 ins, 76 x 101 cms



Solitude in Dusk, 2021 (cat. 35)
acrylic on paper
5 x 7 ins, 12.5 x 18 cms



The Wilderness has a Mysterious Tongue , 2021 (cat. 3)
acrylic on canvas
20 x 16 ins, 51 x 40.5 cms



Night Vision, 2021 (cat. 5)
acrylic on canvas
30 x 40 ins, 76 x 101 cms



Sketch Book Pages, 2021
acrylic on paper
11½ x 16 ins, 29 x 41 cms



Sketch Book Pages, 2021
acrylic on paper
11½ x 16 ins, 29 x 41 cms



A Solitude, A Refuge, II, 2021 (cat. 9)
acrylic on gesso board
14 x 14 ins, 35.5 x 35.5 cms



A Solitude, A Refuge, I, 2021 (cat. 12)
acrylic on gesso board
36 x 24 ins, 91.5 x 61 cms



The Deep Sea, 2021 (cat.4)
acrylic on canvas
24 x 30 ins, 61 x 76 cms



A River Wish, 2021 (cat. 8)
acrylic on canvas
24 x 36 ins, 61 x 91.5 cms



There is Pleasure in the Pathless Woods, 2021 (cat. 10)
acrylic on paper mounted on board
6 x 8 ins, 15 x 20.5 cms



What if My Leaves are Falling like Its Own, 2021 (cat. 24)
acrylic on gesso board
10 x 10 ins, 25 x 25 cms



There is Rapture on the Lonely Shore, 2021 (cat. 11)
acrylic on paper mounted on board
5 x 7¼ ins, 13 x 18.5 cms





The Lonely Shore, 2021 (cat. 43)
acrylic on canvas
36 x 48 ins, 92 x 122 cms



Now Dark, Now Glittering, Now Reflecting Gloom I, 2021 (cat. 37)
acrylic on paper mounted on board
6 x 11½ ins, 15 x 29 cms



Now Dark, Now Glittering, Now Reflecting Gloom II, 2021 (cat. 38)
acrylic on gesso board
10 x 20 ins, 25.5 x 51 cms



Visit the Soul in Sleep II , 2021 (cat. 26)
acrylic on paper
7 x 5 ins, 18 x 13 cms





To Visit the Soul, 2021 (cat. 20)
acrylic on canvas
24 x 30 ins, 61 x 76 cms



By the Deep Sea, 2021 (cat. 17)
acrylic on gesso board
14 x 14 ins, 35.5 x 35.5 cms



Solitude at Dusk, 2021 (cat. 40)
acrylic on gesso board
10x 10 ins, 25.5 x 25.5 cms



A Solitude, 2021 (cat. 15)
acrylic on canvas
24 x 30 ins, 61 x 76 cms



To the Woods, 2021 (cat. 25)
acrylic on gesso board
10 x 20 ins, 25.5 x 51 cms



The Gleam of a Remoter World, 2021 (cat. 7)
acrylic on canvas
24 x 30 ins, 61 x 76 cms



If Winter Comes Spring Can't be Far Behind, 2021 (cat. 16)
acrylic on canvas
20 x 16 ins, 51 x 40.5 cms



Visitor at Dusk, 2021 (cat. 23)
acrylic on canvas
24 x 36 ins, 61 x 91 cms

E-Catalogue produced for the exhibition
John Caple, *In The Pathless Woods*
9 November – 10 December 2021
John Martin Gallery
38 Albemarle Street, London W1S 4JG
Nearest Tube: Green Park
Monday to Friday 10-6pm

Enquiries: Tara Whelan, tara@jmlondon.com
T +44 (0)20 7499 1314 www.jmlondon.com
Instagram and Facebook updates @johnmartingallery

Print Version:
ISBN 978-1-9993013-9-2