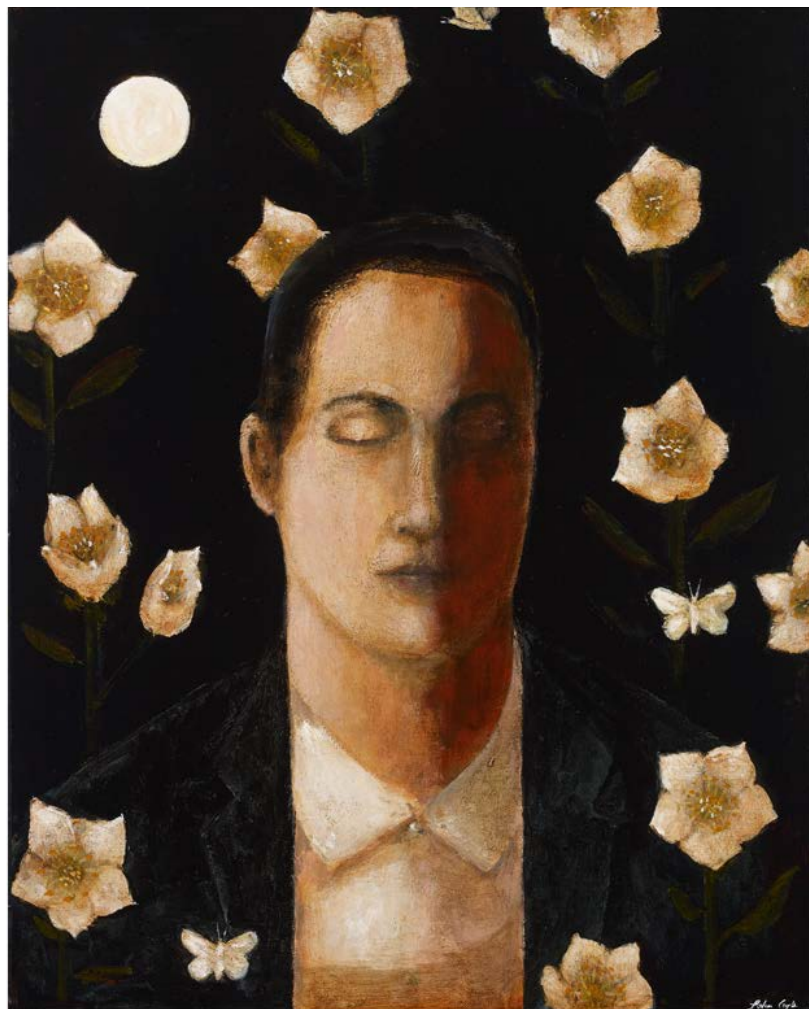


silence *and* twilight

J O H N C A P L E

6 – 30 June 2019

John Martin Gallery



I See Thee Better in the Dark, 2018 (cat. 2)
acrylic on board, 19¼ x 15¼ inches, 50 x 40 cms

*One darkest glen
Sends from its woods of musk-rose, twined with jasmine
A soul-dissolving odour, to invite
to some more lovely mystery. Through the dell
Silence and twilight here, twin sisters, keep
Their noonday watch, and sail among the shades
Like vaporous shapes, half-seen ...*

From *Alastor; or the Spirit of Solitude*, 1815
Percy Bysshe Shelley



St John's Eve, 2019 (cat. 6)
acrylic on canvas, 24 x 30 inches, 61 x 76 cms

John Caple, *Silence and Twilight*

The paintings in this exhibition follow a journey beginning on midsummer's day and then meandering into the evenings of late autumn. Midsummer's Eve is a bittersweet moment: both the height of summer and the start of summer's ending. It was the time when divinations revealed what the darker months of winter might bring: visions seen through doorways and mirrors, with candles and fires to strengthen the sun on its journey.

Taking his inspiration from the poetry of Emily Dickinson and Shelley's poem, 'Alastor', John Caple has set his paintings in the landscapes and formal gardens of his home in Somerset as well as a timeless, imagined space. Within this world he explores our delicate relationship with nature, both our innate craving to be part of the wild and the melancholy of our inability to achieve this state.



The Poet's Journey, 2019 (cat. 1)
acrylic on canvas, 24 x 36 inches, 61 x 91 cms



These are the Days when the Birds Come Back, 2018 (cat. 21)
acrylic on board, 15¾ x 119¾ inches, 40 x 50 cms



Alastor, 2019 (cat. 5)
acrylic on canvas, 24 x 30 inches, 61 x 76 cms



Midnight Wish, 2019 (cat. 3)
acrylic on canvas, 30 x 40 inches, 76 x 101 cms



The Poet, 2018 (cat. 19)
acrylic on board, 12¾ x 15¾ inches, 32 x 40 cms



In The Wood, 2019 (cat. 7)
acrylic on canvas, 40 x 30 inches, 101 x 76 cms



River Journey, 2019 (cat. 8)
acrylic on canvas, 24 x 36 inches, 61 x 91 cms



Night Journey, 2019 (cat. 9)
acrylic on canvas, 30 x 40 inches, 76 x 101 cms



We are the Flower, 2018 (cat. 22)
acrylic on board, 15¾ x 11¾ inches, 40 x 30 cms



Hill Village, 2019 (cat. 12)
acrylic on canvas, 40 x 30 inches, 101 x 76 cms



Midsummer's Evening, 2018 (cat. 13)
acrylic on board, 7 x 9½ inches, 18 x 24 cms



The Hillside Must Not Know It, 2018 (cat. 14)
acrylic on board, 19¾ x 15¾ inches, 50 x 40 cms



On This Wondrous Sea, Silently Sailing, 2018 (cat. 32)
acrylic on board, 9½ x 11¼ inches, 24 x 30 cms



Summer's Eve, 2018 (cat. 36)
acrylic on board, 15¾ x 11¾ inches, 40 x 30 cms



Shelley, 2018 (cat. 15)
acrylic on board, 15¼ x 19¼ inches, 24 x 30 cms



A Dusk Charm, 2019 (cat. 16)
acrylic on canvas, 30 x 40 inches, 76 x 101 cms



Which Walk No Move the Village Street, 2018 (cat. 23)
acrylic on board, 15¾ x 119¾ inches, 40 x 50 cms



A Summer's Night, 2019 (cat. 4)
acrylic on canvas, 40 x 30 inches, 101 x 76 cms



There is Something Quieter than Sleep within this Room, 2018 (cat. 17)
acrylic on board, 15¼ x 11¼ inches, 40 x 30 cms



Midsummer Dusk Wish, 2018 (cat. 30)
acrylic on board, 15¼ x 11¼ inches, 40 x 30 cms



Solitude, 2018 (cat. 18)
acrylic on board, 7 x 9½ inches, 18 x 24 cms



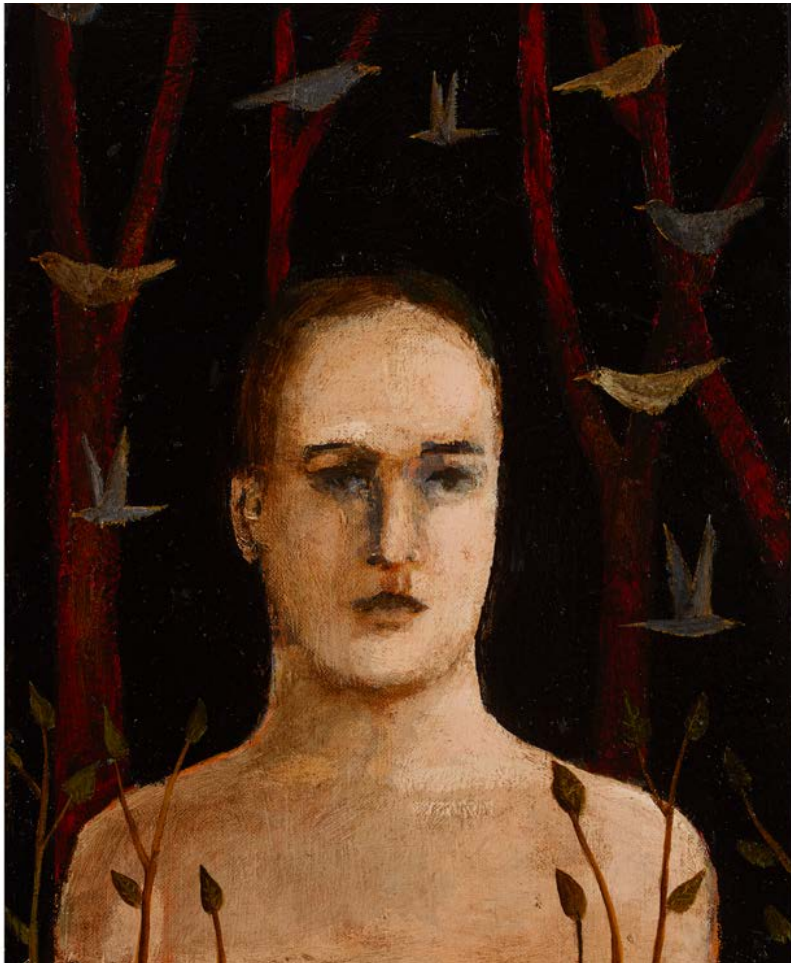
Where I Have Lost, I Softer Tread, 2018 (cat. 40)
acrylic on board, 15¾ x 119¾ inches, 40 x 50 cms



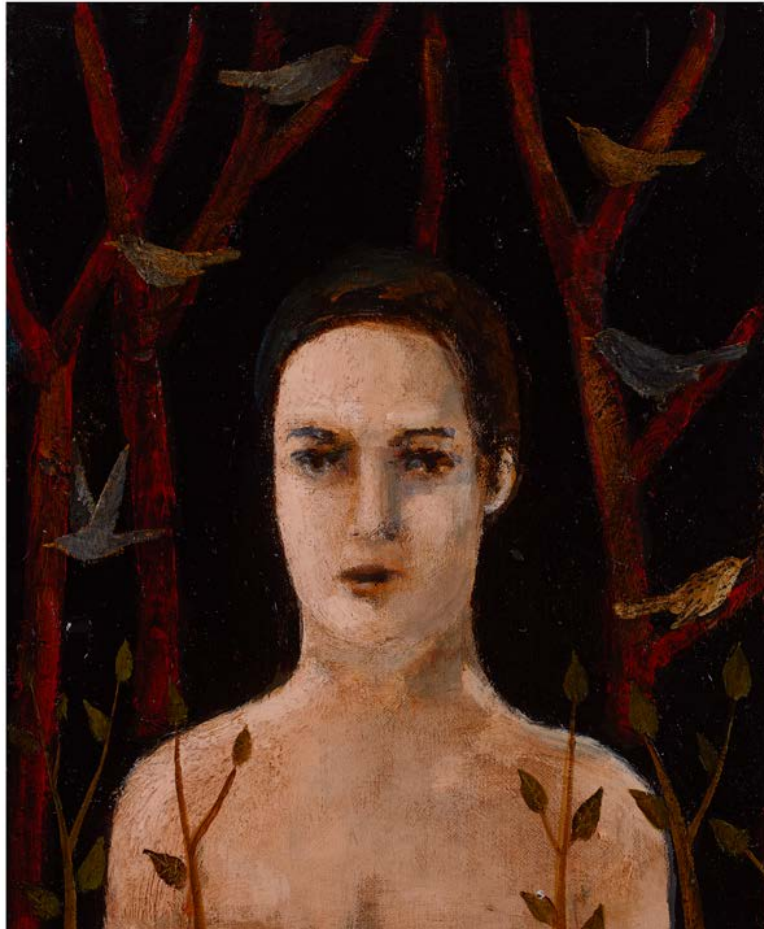
In Tranquil Wanderings, 2018 (cat. 27)
acrylic on board, 15¾ x 119¾ inches, 40 x 50 cms



Midsummer's Eve, 2018 (cat. 20)
acrylic on board, 19¾ x 15¾ inches, 50 x 40 cms



Adam, 2018 (cat. 10)
acrylic on board, 11¾ x 9½ inches, 30 x 24 cms



Eve, 2018 (cat. 11)
acrylic on board, 11¾ x 9½ inches, 30 x 24 cms



Here are the Birds that Sought the Sun, 2018 (cat. 29)
acrylic on board, 15¾ x 119¾ inches, 40 x 50 cms



My Faith That Dark Adores, 2018 (cat. 31)
acrylic on board, 15 $\frac{3}{4}$ x 11 $\frac{3}{4}$ inches, 40 x 50 cms



Evening Quiet, 2018 (cat. 28)
acrylic on board, 7 x 9½ inches, 18 x 24 cms



Summer Eve Charm, 2018 (cat. 28)
acrylic on board, 9½ x 7 inches, 24 x 18 cms



A Little Forest, 2018 (cat. 24)
acrylic on board, 15¾ x 119¾ inches, 40 x 50 cms

Digital Catalogue published by
John Martin Gallery for the exhibition
John Caple, *Silence and Twilight*
6–30 June 2019 at John Martin Gallery,
First Floor, 38 Albemarle Street, London W1S 4JG.
Opening hours: Monday to Friday 10am to 6pm
Saturdays, 10am to 1:30pm
(Mayfair Art Weekend, 28–30 June)
For all enquiries contact Tara Whelan, tara@jmlondon.com
Tel +44 (0)20 7499 1314
www.jmlondon.com

Accompanying print catalogue available
ISBN 978-1-9993013-2-3

