



Uwe Walther

MAP PAINTINGS: 2015-18

**Uwe Walther**

MAP PAINTINGS: 2015–18

4–27 October 2018

John Martin Gallery

### *Map Paintings: 2015–18*

I grew up in East Germany during the DDR/German Democratic Republic and studied painting in Leipzig under Bernhard Heisig, later on in Basel under Werner von Mutzenbecher. In 1990 I moved to Basel where I still live today. I come from a family of geographers (my Father was a land surveyor, and my Mother a cartographer) and so when I first saw the legendary maps of Switzerland I knew that I would do something with them. Years passed doing various painting projects, but always the idea of painting on maps stayed in my mind. Finally, in the spring of 2010 I had my first exhibition of work entirely painted on maps at the Marc de Puechredon Gallery. Seeing them all collected together was something for which I had been searching for a very long time.

The idea at the heart of my map paintings is quite simple: every map contains different information about the territory that it represents (the location of streets, forests, water, villages, as well as the altitude of the ground etc...). When you study a map, this is the information that helps you visualise the landscape. This is exactly what I do with my pictures: I read a map then I put it into the cinema of my mind and I imagine how the terrain might appear. In doing so, I transfer the objective, technical and scientific elements of a territory, approved and published by the state, into a subjective idea of a landscape.

When one has accepted the idea of a purely imagined landscape, further readings and ways of developing a picture arise. A map can hardly claim to include all the information available; weather maps mostly reveal no more than borders between countries and roadmaps rarely allow you to anticipate altitude, vegetation or likely weather conditions. Swiss maps are revered by cartographers because they have developed a unique way of suggesting the feeling of a place whilst also providing multiple levels of sophisticated technical information. To this already impressive amount of data my paintings add further layers of representation: perspective, weather, the sense of space and people.

My paintings tend towards the classical legacy of landscape painting (inevitably slightly romanticised), but without taking away from nature of the map. I want to keep the image readable, the tempera of the painting and the printed filigree of the map's surface must work together and balance their separate perspectives: one, a bird's eye view that is read close to, the other, a landscape, viewed from a distance.

Uwe Walther, 2018



*Mürren Finsteraarhorn*, 2016 (cat. 1)  
tempera on paper  
59¾ x 57¾ inches, 152 x 147 cms



*Vissoie St. Niklaus*, 2016 (cat. 2)  
tempera on paper  
59¾ x 57¾ inches, 152 x 147 cms



*Locarno Bellinzona*, 2016 (cat. 3)  
tempera on paper  
59¾ x 57¾ inches, 152 x 147 cms



*Evolène Randa Saas, 2015 (cat. 6)*  
tempera on paper  
22 x 85½ inches, 57 x 217 cm



Vissoie St.Niklaus Simplon, 2015 (cat.5)  
tempera on paper  
22 x 87 inches, 57 x 221 cm



*Col de Balme Orsières Chanrion*, 2015 (cat. 6)  
tempera on paper  
22 x 85½ inches, 57 x 217 cm

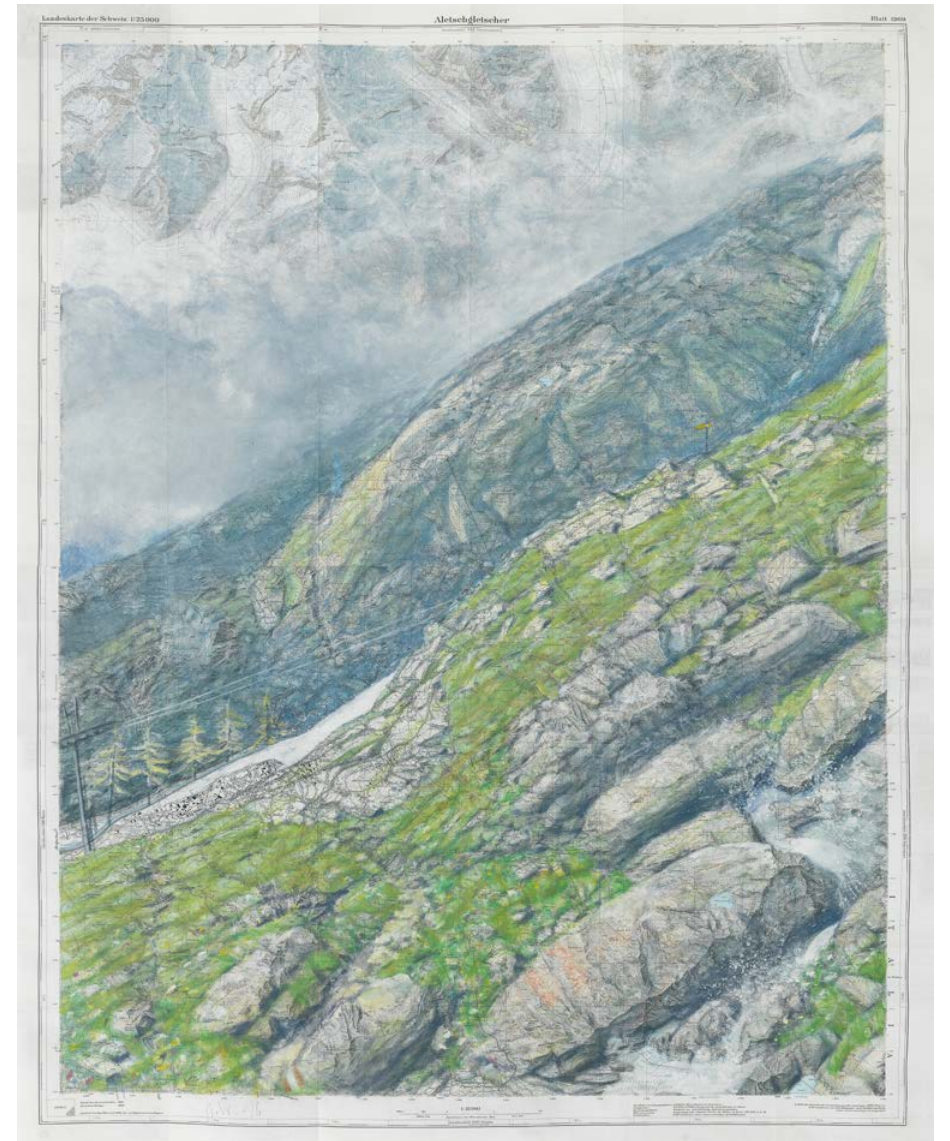




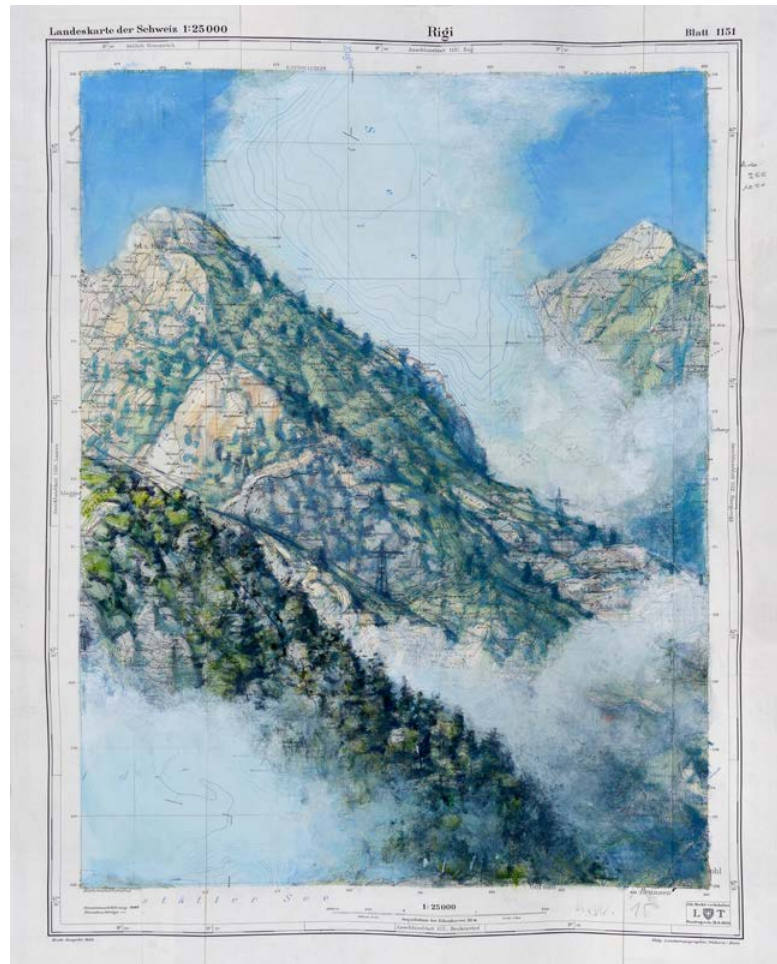
*Valles-d'Iliez Dent de Morcles Sion*, 2015 (cat. 4)  
tempera on paper  
22 x 85½ inches, 57 x 217 cm



*Reichenau, 2015 (cat. 9)*  
tempera on paper  
41 x 30¾ inches, 104 x 78 cms



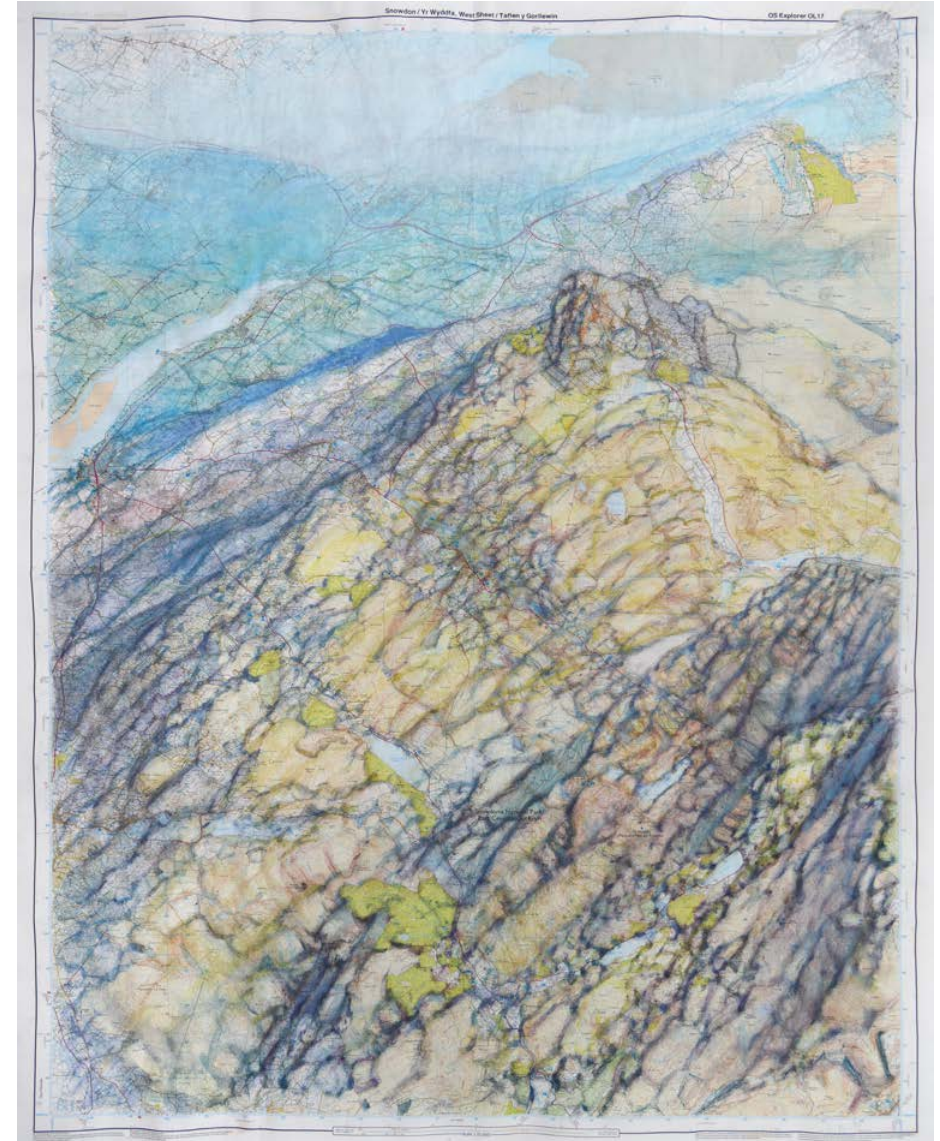
*Aletschgletscher*, 2016 (cat. 8)  
tempera on paper  
41 x 30¾ inches, 104 x 78 cms



*Rigi*, 2015 (cat. 16)  
tempera on paper  
22½ x 17 inches, 57 x 43 cms



*Raron*, 2016 (cat. 15)  
tempera on paper  
22½ x 17 inches, 57 x 43 cms



*Snowdon, Yr Wyddfa* 2018 (cat. 26)  
tempera on paper  
49½ x 37 inches, 126 x 94 cms



*Widdy Head* 2018 (cat. 19)  
tempera on paper  
27 x 20½ inches, 69 x 52 cms



*Meall Meadhonach*, 2018 (cat. 23)  
tempera on paper  
24 x 21¼ inches, 64 x 54 cms

*LIST OF WORKS*

1. Mürren Finsteraarhorn, 2016,  
tempera paper, 59¾ x 57¾ inches, 152 x 147cm
2. Vissoie St. Niklaus, 2016,  
tempera paper, 59¾ x 57¾ inches, 152 x 147cm
3. Locarno Bellinzona, 2016,  
tempera paper, 59¾ x 57¾ inches, 152 x 147cm
4. Valles-d'Illeiez Dent de Morcles Sion, 2015,  
tempera paper, 22 x 85½ inches, 57 x 217 cm
5. Vissoie St. Niklaus Simplon, 2015,  
tempera paper, 22 x 87 inches, 57 x 221 cm
6. Evolène Randa Saas, 2015,  
tempera paper, 22 x 85½ inches, 57 x 217 cm
7. Col de Balme Orsières Chanrion, 2015,  
tempera paper, 22 x 85½ inches, 57 x 217 cm
8. Aletschgletscher, 2016,  
tempera paper, 41 x 30¾ inches, 104 x 78 cms
9. Reichenau, 2015,  
tempera on two maps, 41 x 30¾ inches, 104 x 78 cms
10. Simplon, 2016,  
tempera paper, 41 x 30¾ inches, 104 x 78 cms
11. Aletschgletscher Binntal, 2016,  
tempera paper, 41 x 30¾ inches, 104 x 78 cms
12. Évian-les-Bains, 2016,  
tempera paper, 22½ x 17 inches, 57 x 43cm
13. Lötschental, 2016, 57x43cm,  
tempera paper, 22½ x 17 inches, 57 x 43cm
14. Murten, 2016, 57x43cm, t  
tempera paper, 22½ x 17 inches, 57 x 43cm
15. Raron, 2016, 57x43cm,  
tempera paper, 22½ x 17 inches, 57 x 43cm
16. Rigi, 2015, 57x43cm,  
tempera paper, 22½ x 17 inches, 57 x 43cm
17. Butter Hill  
tempera paper, 22½ x 17 inches, 61 x 46cm
18. Porlock Bay, 2018  
tempera paper, 24 x 18 inches, 65 x 50 cm
19. Widdy Head, 2018  
tempera paper, 27 x 20½ inches, 69 x 52 cm
20. Sheep Creep, 2018  
tempera paper, 27 x 19½ inches, 69 x 50 cm
21. An Coireag, 2018  
tempera paper, 28 x 20 inches, 72 x 51 cm
22. Bealach na Cruaiche, 2018  
tempera paper, 22½ x 21½ inches, 57 x 55 cm
23. Meall Meadhonach, 2018  
tempera paper, 24 x 21¼ inches, 64 x 54 cm
24. Ardmore Point, 2018  
tempera paper, 28¾ x 19¼ inches, 72 x 49 cm
25. Caol Raineach, 2018  
tempera paper, 23½ x 18 inches, 60 x 46 cm
26. Snowdon / Yr Wyddfa,  
West Sheet / Taflen y Gorlliewin, 2018  
tempera paper, 49½ x 37 inches, 126 x 94 cm



John Martin Gallery