

—Barry McGlashan
That Howling Infinite



— Barry McGlashan
That Howling Infinite

John Martin Gallery



ABOVE
— *The Relatives*
oil on canvas, 94 x 129 cm, 37 x 51 ins

FRONT COVER
— *The Great and Terrible* (detail)
oil on canvas, 94 x 94 cm, 37 x 37 ins

— Barry McGlashan
That Howling Infinite

31 May – 22 June 2013

John Martin Gallery

38 Albemarle Street
London, W1S 4JG

T +44 (0)20 7499 1314
info@jmlondon.com

Mon-Fri 10-6, Sat 11-4
www.jmlondon.com

*A lovely thing to see
Through the torn paper window
The Galaxy.*

—KOBAYASHI ISSA

The possibilities of a blank, white canvas are endless. Then one idea, one big-bang moment, a lot of activity and energy and the basic elements of the work emerge, the journey begins. The rest is just time and subtle change: you have to lose ideas you love along the way but others emerge and steer you in a new direction. Ideas only come when you're approaching the edge of things and as an artist you then have the liberty to make sense of them in any way you choose. Stories often unfold in many directions all at once, creating a thread that runs through several different pictures; they might even reveal hidden meanings that can be explored or tucked away and left hidden. Always, you try and keep a constant state of wonder and the feeling of some new discovery.

There is no real beginning or end to the work; it's just a continuing journey. You rely on a deep well of ideas to take you further on, closer to the edge of the world, through the maelstrom and what Herman Melville described as 'that howling infinite'. The paintings imagine those journeys where humanity is pitted against the great forces of nature: travellers trying to make sense of what lies ahead, the prospector looking for fortune, the naturalist on a distant shore or the Bounty's mutineers escaping to the edge of the earth in their search for paradise. For all of them, for all of us, the marvel is the view into infinity which these journeys afford, the universe glimpsed through a break in the clouds or the chance encounter with a comet's endless voyage; or through those internal journeys: secrets decoded in a mathematician's scribbled formulae or an artist sitting in contented solitude trying to draw the perfect circle.

BARRY McGLASHAN, 2013

—*Crossing Place*
oil on panel, 61 x 30.5 cm, 24 x 12 ins





—*Higher Ground*
oil on canvas, 76 x 102 cm, 30 x 40 ins



— *The Sky is Thin as Paper Here*
oil on canvas, 94 x 94 cm, 37 x 37 ins

— *The North*
oil on canvas, 94 x 129 cm, 37 x 51 ins





— *The Way Station*
oil on panel
50 x 61 cm, 20 x 24 ins



—*A Storm at Sea*
oil on panel, 39 x 48 cm, 15 x 19 ins



—*Some Far Shore*
oil on canvas, 76 x 76 cm, 30 x 30 ins



— *The Lake House*
oil on canvas,
76 x 101 cm, 30 x 40 ins



— *An Epic of Peace*
oil on canvas
152 x 179 cm, 60 x 70 ½ ins

— *The Learned Fellows*
oil on panel, 61 x 61 cm, 24 x 24 ins





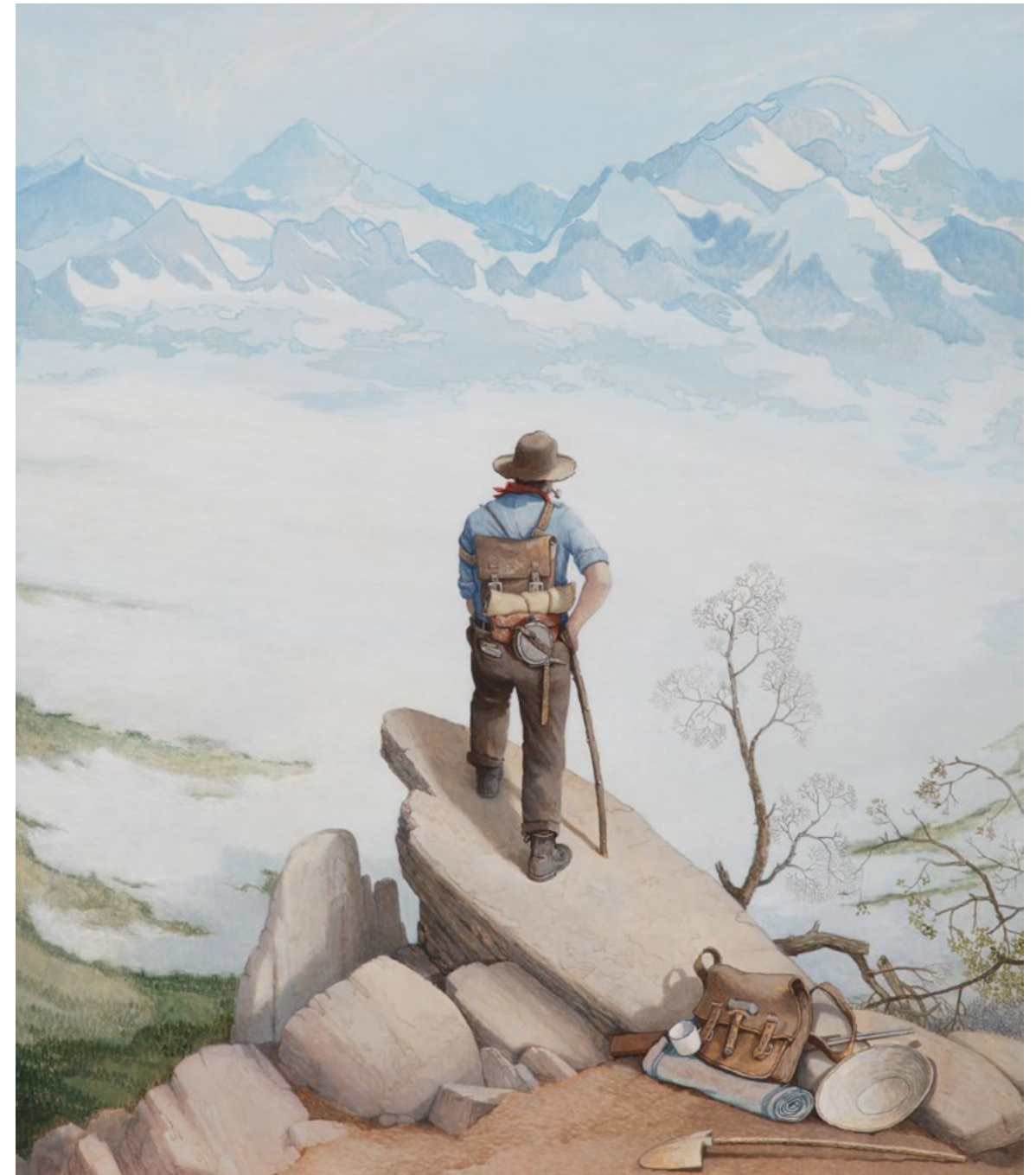
—*The Beetle and the Whale*
oil on panel, 61 x 80 cm, 24 x 31½ ins



—*The Heretic*
oil on canvas, 84 x 106 cm, 33 x 42 ins



—*The Great Whale*
oil on panel, 20 x 28 cm, 8 x 11 ins



—*The Prospector*
oil on panel, 71 x 61 cm, 28 x 24 ins



—*The Watchers*
oil on panel, 30 x 30 cm, 12 x 12 ins



—*House of Flowers*
oil on canvas, 122 x 122 cm, 48 x 48 ins

— *Palace by the Sea*
oil on panel, 20 x 24 cm, 50 x 61 ins





Painted Ship Upon A Painted Ocean
oil on canvas, 37 x 51 ins (94.0 x 129.5 cm)

— *The Celestial*
oil on panel, 29 x 40 cm, 12 x 16 ins





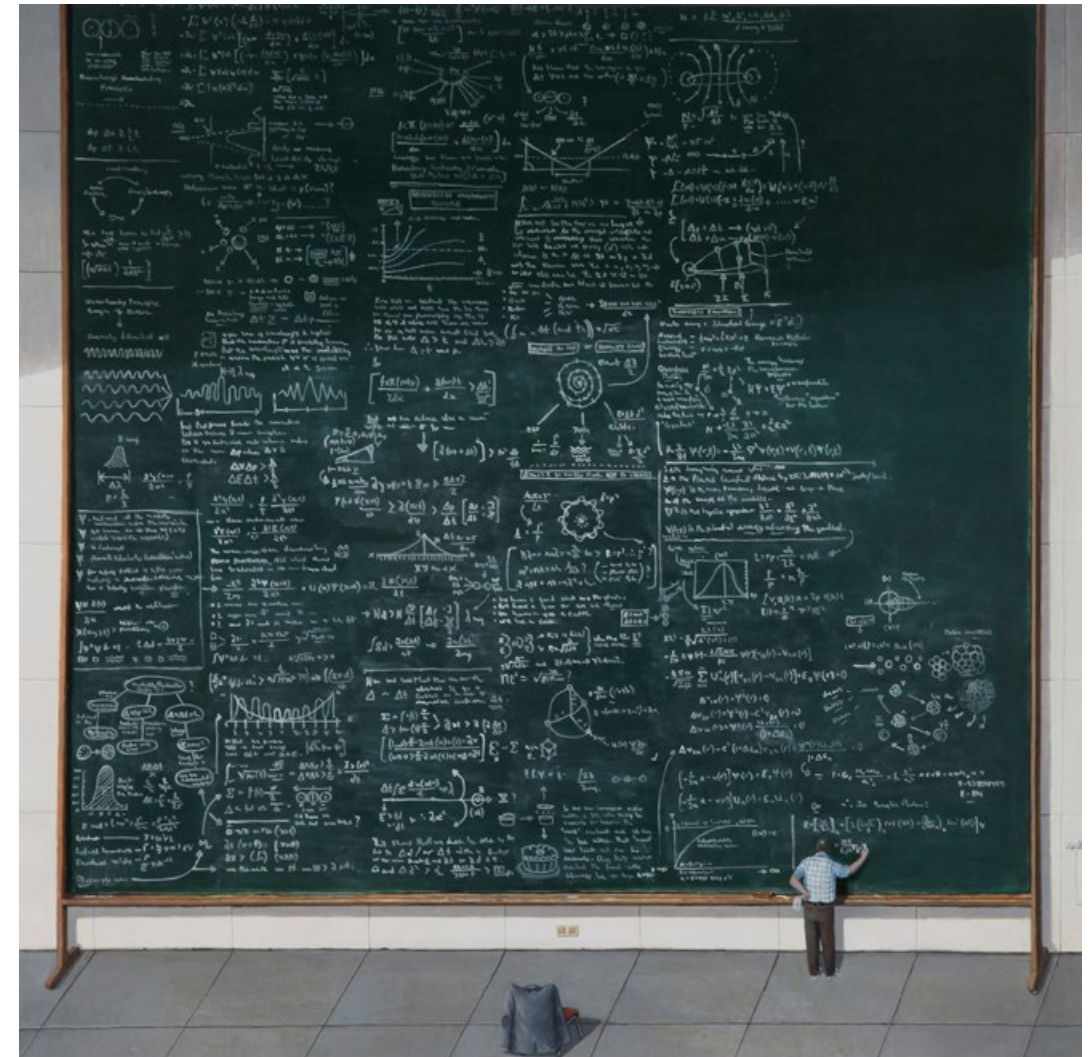
— *The Meteor*
oil on panel, 29 x 40 cm, 12 x 16 ins



—*Inch by Inch*
oil on panel, 61 x 61 cm, 24 x 24 ins



— *The Narcissist*
oil on panel, 61 x 61 cm, 24 x 24 ins



— The Enquiry
oil on panel, 61 x 61 cm, 24 x 24 ins



— *Mutiny I, Paradise (top)* &
Mutiny II, The Underworld
Graphite on paper, 68 x 101 cms 27 x 40 ins



—*New Religion 1 and 2*
oil on canvas, 12 x 17 cm, 5 x 7 ins



—*Breadfruit*
oil on panel, 30 x 40 cm, 11¾ x 15¾ ins



—*A Place in Time*
oil on panel, 30 x 35 cm, 11¾ x 14 ins



—*Totem*
oil on panel, 50 x 61 cm, 19¾ x 24 ins



— *Years of Silence*
oil on panel, 22 x 24 cm, 8¾ x 9¾ ins



—*House in the Woods*
oil on panel, 30 x 38 cm, 11¼ x 15 ins



— *The Old Gods 1 and 2*
oil on panel, 15 x 18 cm, 6 x 7 ins



—*Feeding Sparrows*
oil on panel, 30 x 38 cm, 11¼ x 15 ins



— *The World Below*
oil on panel, 30 x 38 cm, 11¼ x 15 ins

—*Land of Snow and Ice*
oil on panel, 30 x 38 cm, 11¾ x 15 ins





— *The Thinking Man*

oil on panel, 61 x 60 cm, 24 x 31 ins



—*Theatre of the Absurd*
oil on panel, 30 x 38 cm, 12 x 12 ins



—*Way Leads Onto Way*
oil on panel, 20 x 28 cm, 8 x 11 ins



— *The Lighthouse*
oil on panel, 45 x 47 cm, 18 $\frac{3}{4}$ x 18 ins

— *Cold Supper, No Pipes*
oil on canvas, 61 x 71 cm, 24 x 28 ins

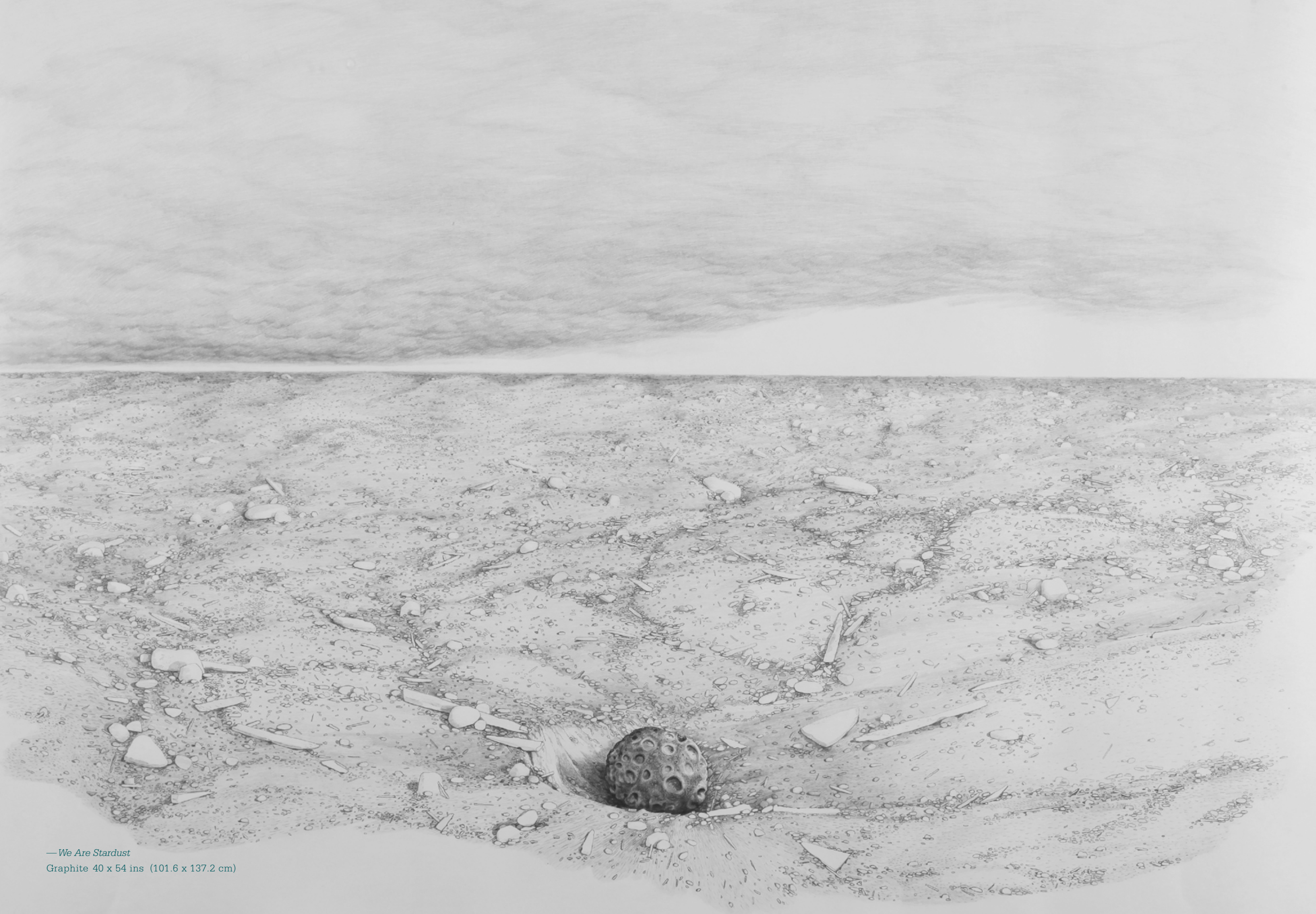




— *The Back Woods*
oil on panel, 15 x 20 cm, 6 x 8 ins



—*Squeezebox*
oil on canvas, 62 x 69 cm, 24¾ x 27 ins



— *We Are Stardust*

Graphite 40 x 54 ins (101.6 x 137.2 cm)

BARRY McGLASHAN

Born 1974, Aberdeen, Scotland

1992-1996 BA Hons (First Class), Grays School of Art, Aberdeen

SOLO EXHIBITIONS

- 2013 That Howling Infinite, John Martin Gallery, London
- 2012 Quiet Please, Open Eye Gallery, Edinburgh
We Are Stardust, Smart Gallery, Aberdeen
- 2011 The Secrets, John Martin Gallery, London
- 2010 The Whiteness of The Whale, Foyer Gallery, Aberdeen
- 2009 Somewhere In The North, The Rendezvous Gallery, Aberdeen
Wonderland, John Martin Gallery, London
- 2007 New Ways To See The World, The Scottish Gallery, Edinburgh
Way Out West, John Martin Gallery, London
- 2006 The Big Country, The Rendezvous Gallery, Aberdeen
- 2005 The Great Adventure, John Martin Gallery, London
- 2004 Between Journeys, The Rendezvous Gallery, Aberdeen
There And Back Again, Roger Billcliffe Fine Art, Glasgow
- 2003 Recent Works, The Rendezvous Gallery, Aberdeen
- 2002 Small Town Continuation, The Rendezvous Gallery, Aberdeen
- 2001 The Alastair Salvesen Art Scholarship
Small Town, The Royal Scottish Academy - The Fettes Gallery,
Fettes College, Edinburgh
- 2000 New Lands, The Rendezvous Gallery, Aberdeen
- 1999 Works on Paper, The Open Eye Gallery, Edinburgh
Something New, The Rendezvous Gallery, Aberdeen
- 1998 New Works, The Rendezvous Gallery, Aberdeen

AWARDS

- 2012 The Cuthbert Award, Royal Glasgow Institute
- 2011 Commendation (Aberdeen Artists Society)
- 2009 First Prize, The Meffan, Winter Exhibition
- 2006 The Meyer Oppenheim Award (Royal Scottish Academy)
- 2005 The James McBey Travel Award
Aberdeen Visual Arts Awards Scheme Grant
Commendation (Aberdeen Artists Society)
- 2003 The Shell Expro Award (Aberdeen Artists Society)
- 2001 The Alastair Salvesen Travelling Scholarship-three months study in the USA
The Shell Premier Award (Aberdeen Artists Society)
- 2000 The Shell Expro Award (Aberdeen Artists Society)
- 1998 The Guthrie Award (Royal Scottish Academy)
- 1996 The MacAllan Award (Royal Scottish Academy)
The John Kinross Scholarship - three months study in Florence
- 1995 The Steele-Cornwall Scholarship (Grays School of Art)
Grays Former Pupil Award (Grays Former Pupil Society)
- 1994 The Hector Memorial Prize (Grays School of Art)
The Wood Group Purchase Prize (Grampian Hospitals Art Trust)

PUBLIC COLLECTIONS

BP Aberdeen Art Gallery, Grampian Hospitals Art Trust,
The Royal Scottish Academy, Aberdeen City Council, The Robert Gordon University,
Paintings In Hospitals (Edinburgh), MacAllan Distilleries
The Royal Bank Of Scotland, Aberdeen Asset Management (UK & New York)
The Scottish Society (New York City), Professional Footballers Association