

An impressionistic painting of a forest path. The scene is viewed through the trunks of several tall, slender trees. The ground is covered in a dense carpet of green grass and foliage, with dappled sunlight creating a play of light and shadow. The foliage of the trees is thick and textured, with various shades of green and hints of yellow and white where light hits. The overall style is soft and painterly, characteristic of Impressionism.

Andrew Gifford

SUMMER PAINTINGS FROM FRANCE



# Andrew Gifford

SUMMER PAINTINGS FROM FRANCE

John Martin Gallery  
38 Albemarle Street, London W1S 4JG  
25 June – 26 July Mon to Fri 10 – 6pm  
020 7499 1314 / [tara@jmlondon.com](mailto:tara@jmlondon.com)

[www.jmlondon.com](http://www.jmlondon.com)

Andrew Gifford has had a home in the Dordogne for over 25 years and its landscape has been a recurring subject in his painting over that time. The sheer pleasure of painting outside in the late spring and summer months runs through every one of these smaller paintings, gathered together from the last six years. The exhibition also provides an opportunity to see a series of Poplar paintings from 2023, first shown at the Société des Beaux-Arts in Périgord, where the artist was invited as the guest of honour last October.



1. *Poplars Near Gout-Rossignol, July 2023, (I)*  
oil on panel, 15 × 15¾ ins, 38 × 40 cms

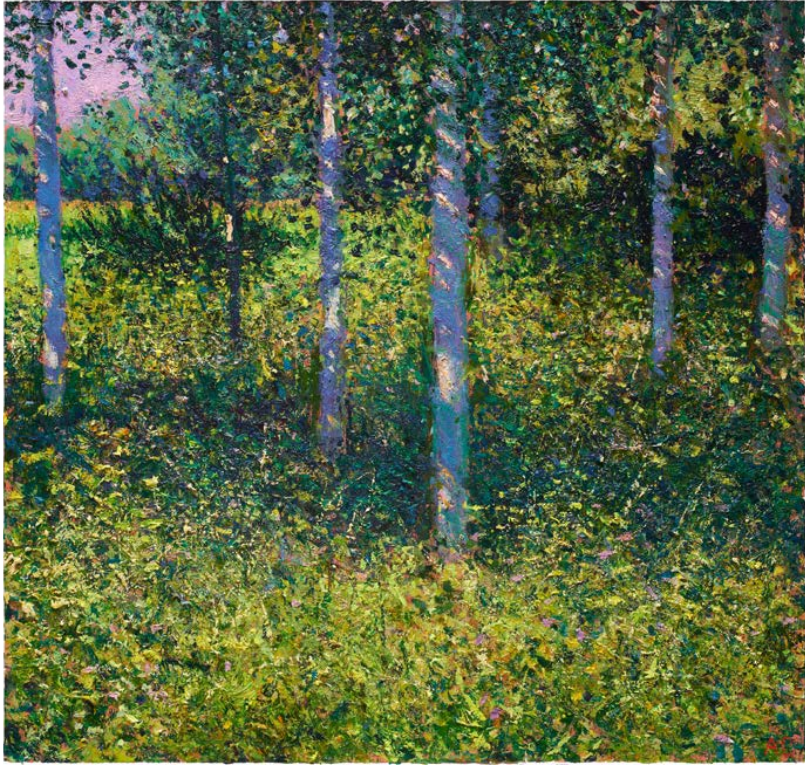


2. *Poplars Near Gout-Rossignol, July 2023, (II)*  
oil on panel, 15 × 15¼ ins, 38 × 40 cms



3. *Poplars Near Gout-Rossignol, July 2023, (III)*  
oil on panel, 15 × 15¾ ins, 38 × 40 cms





4. *Poplars Near Gout-Rossignol, July 2023, (IV)*  
oil on panel, 15 × 15¾ ins, 38 × 40 cms

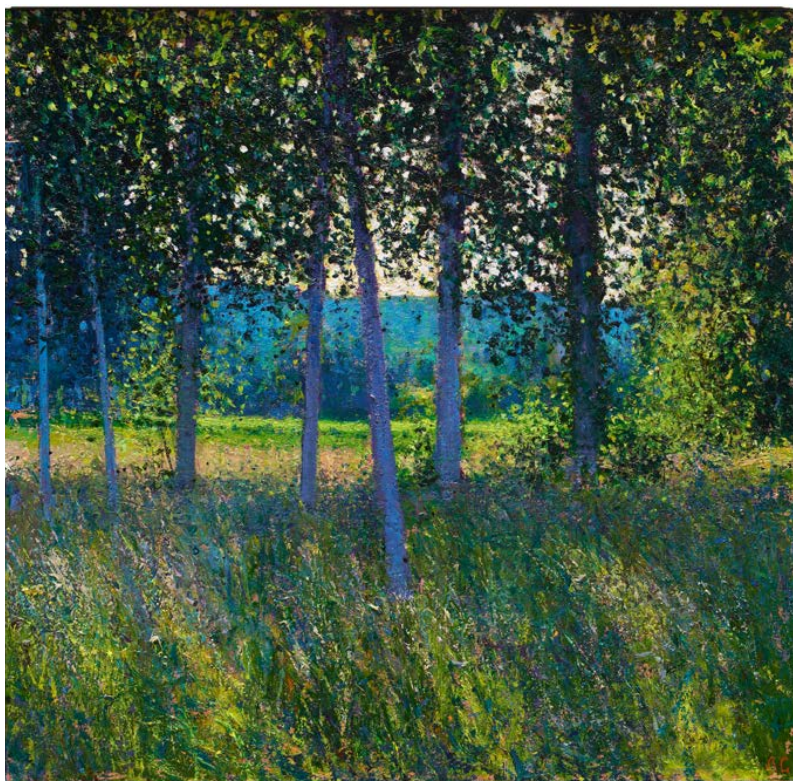


5. *Poplars Near Gout-Rossignol, July 2023, (V)*  
oil on panel, 15 × 15¾ ins, 38 × 40 cms





6. *Poplars Near Gout-Rossignol, July 2023, (VI)*  
oil on panel, 15 × 15¼ ins, 38 × 40 cms

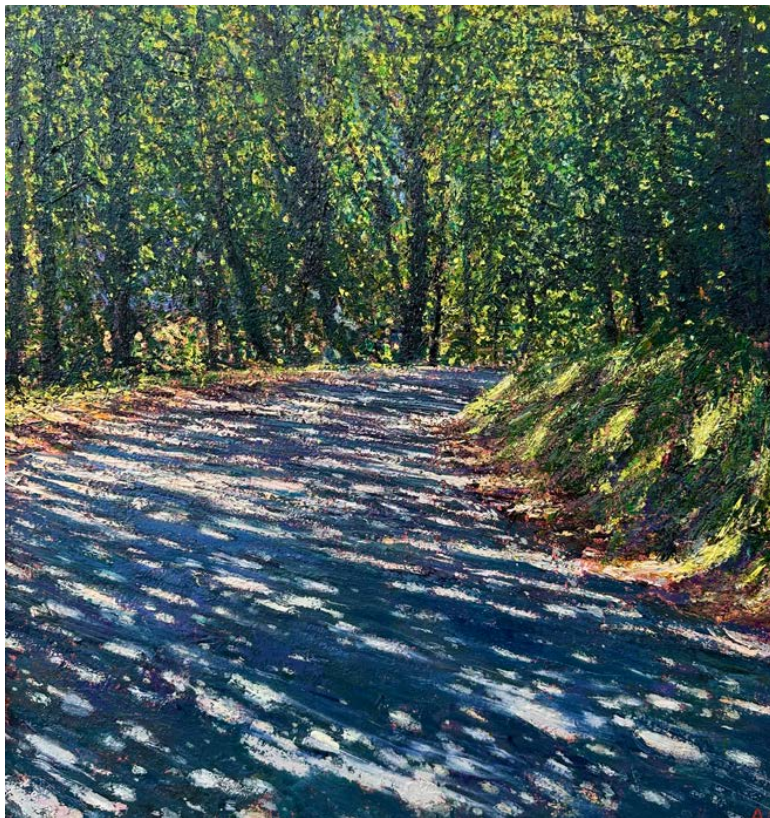


7. *Poplars in Late Spring, Gout-Rossignol, May 2023*  
oil on panel, 15¼ x 15¾ ins, 39 × 40 cms







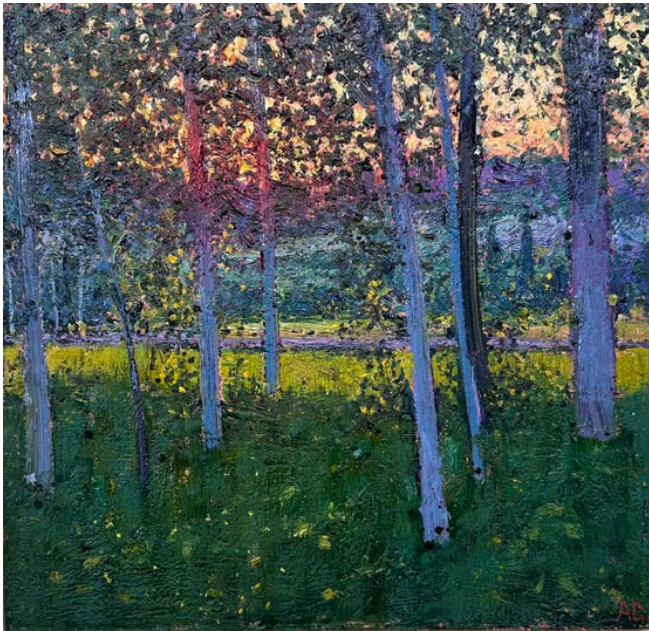


8. *Road to Venduire, August 2023*  
oil on panel, 15½ x 14¾ ins, 39.5 × 37.5 cms



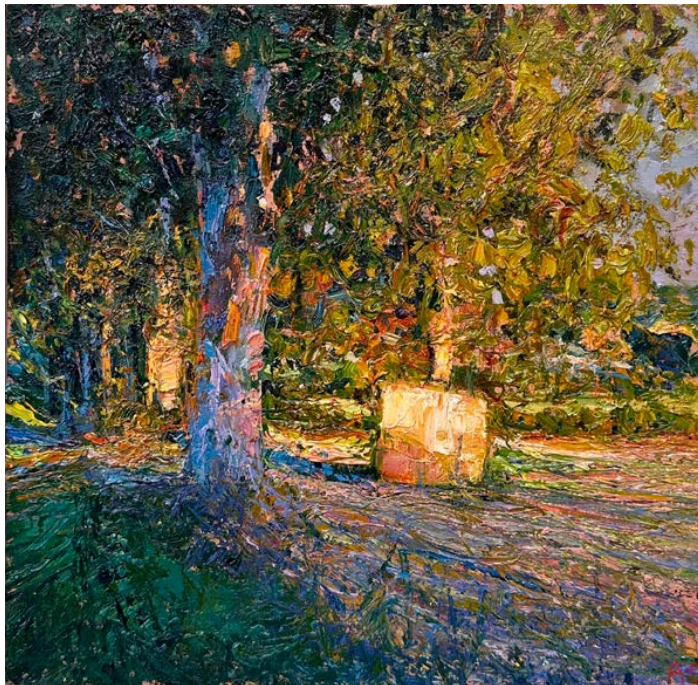


9. *Poplars near Crossroads at Gouts-Rossignol, May 2024*  
oil on panel, 9¾ x 10¼ ins, 25 × 26 cms



10. *Poplars near Crossroads at Gouts-Rossignol, May 2024*  
oil on panel, 9¾ x 10¾ ins, 25 × 26 cms





11. *Hay Bay near Fontaine, July, 2023*  
oil on panel, 9¾ x 10¼ ins, 25 × 26 cms



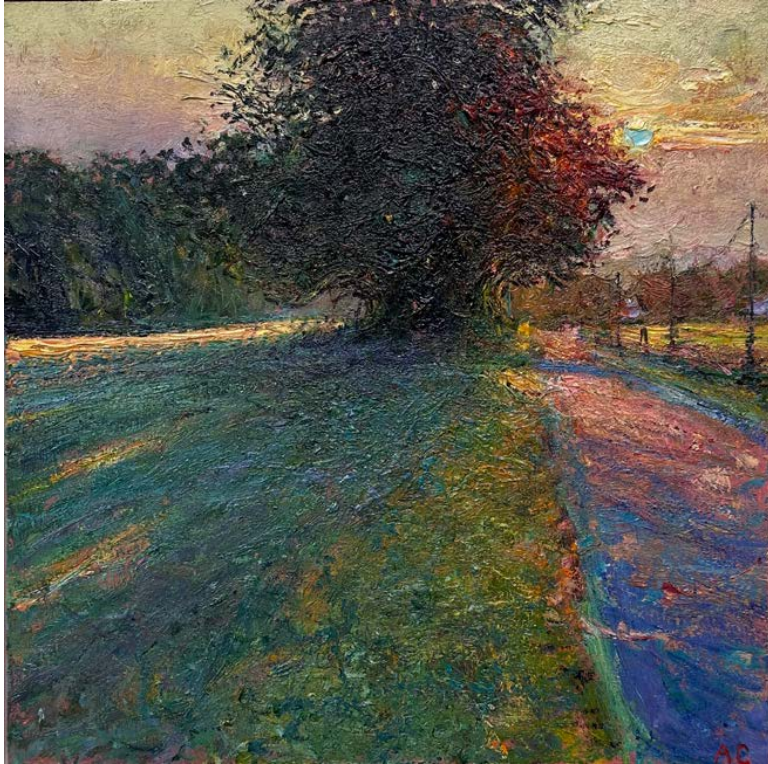
12. *Road to Fontaine, Late Afternoon, August 2023*  
oil on panel, 9 × 9½ ins, 23 × 24 cms



13. *Road to Fontaine, Late Afternoon II, August 2023*  
oil on panel, 11¾ x 13½ ins, 30 × 34 cms

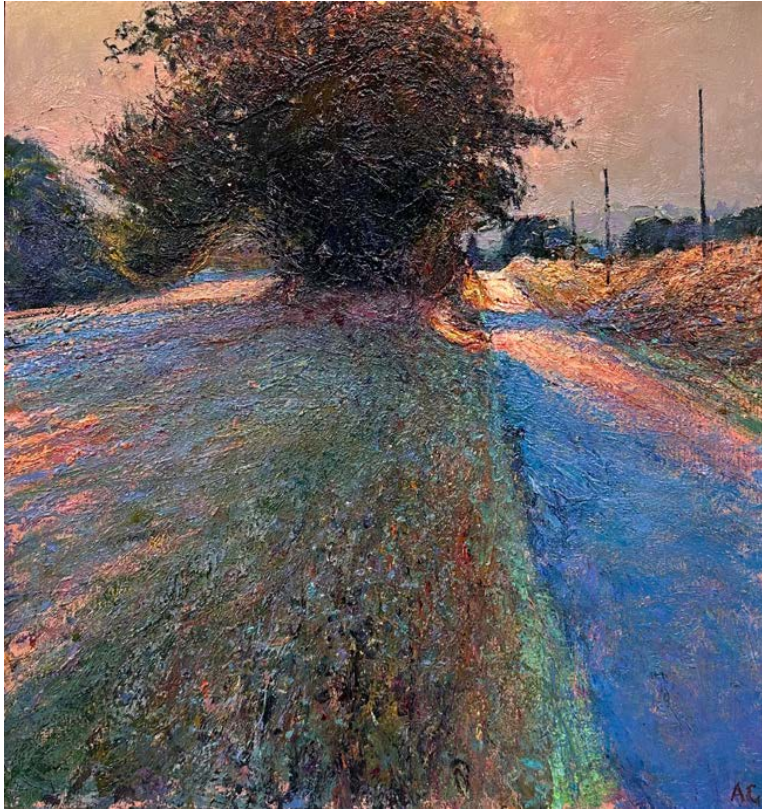






14. *Last Sun on Road to Fontaine, August 2023*  
oil on panel, 12¼ x 12¼ ins, 31 × 31 cms



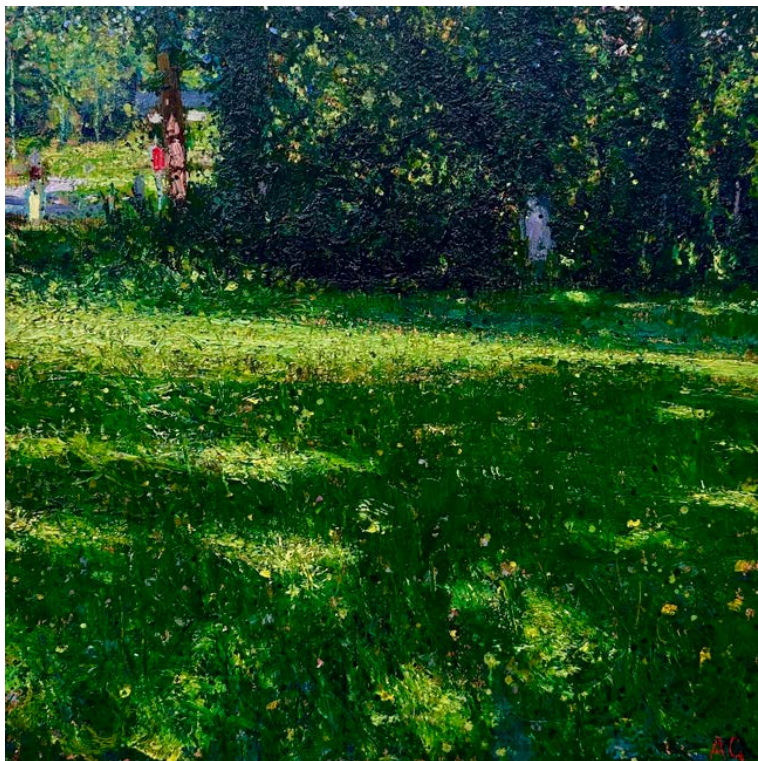


15. *Late Light on the Road to Fontaine, August 2023*  
oil on panel, 14¼ x 13½ ins, 31 × 31 cms





16. *Corriander Field, August 2023*  
oil on panel, 15¾ x 15 ins, 40 × 38 cms



17. *Spring Sunlight on Grass near the Cheval Crossroads, May 2023*  
oil on panel, 12¼ x 12¼ ins, 31 × 31 cms









18. *Shadow on Corn Stubble near Fontaine, August 2023*  
oil on panel, 15¾ x 15 ins, 40 × 38 cms



19. *View from my Garden, Champagne Fontaine, 2018*  
oil on panel, 12 × 12¼ ins, 30.5 × 31 cms





20. *Shadows Across the Fields near Gout-Rossignol*, 2018  
oil on panel, 15 × 15¼ ins, 38 × 40 cms



21. *Poplar on Road near La Tour Blanche, 2022*  
oil on panel, 9¾ x 8¼ ins, 25 × 21 cms



John Martin Gallery