



John Martin Gallery
Expo Chicago
24 – 27 April 2025

Catalogue of work

**Melita Denaro
Andrew Gifford
Anne Magill
Olivia Musgrave**

John Martin Gallery
38 Albemarle Street
London W1S 4JG
info@jmlondon.com

M: +44 7974 567 464
T: +44 20 7499 1314

Melita Denaro



“Melita Denaro, for me, is one of the handful of genuine personalities in contemporary Irish painting – or indeed, in the whole of the British Isles. Her authenticity, her idiosyncratic lyricism, her highly individual formats, are unmistakable... Denaro has more or less imposed her vision on a whole section of the Irish Coastline” - *Brian Fallon, chief critic The Irish Times*

There are few artists today who can elicit the raw, emotional power of paint as Melita Denaro. For 25 years she has painted the land around her childhood home on the Inishowen peninsula in Donegal; the home she left after the death of her father and to which she returns every month. These are paintings about exile and belonging; about the memories and friendships that have sustained her work and in which she has found her unique voice as a painter. Her work is held in public and private collections including the Irish State Collection, Ulster Museum and HRH King Charles.



Melita Denaro
George Home from the Isle of Doagh Wedding, 2015
oil on panel, 13 × 14½ inches



Melita Denaro
A Gasp of Light, 2023
oil on canvas laid on board, 15 × 18 inches



Melita Denaro

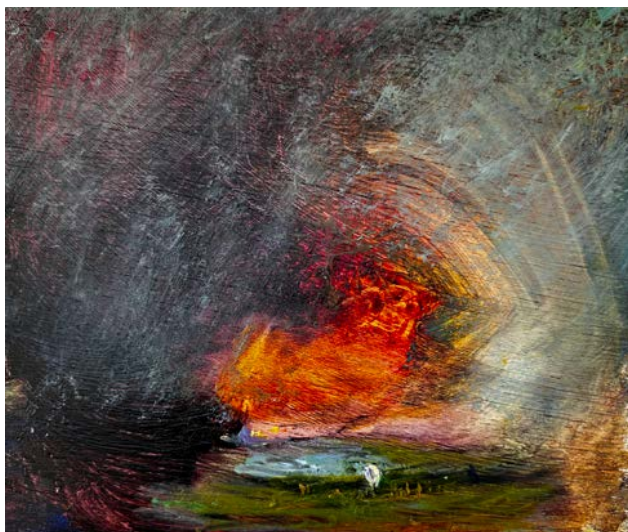
Rollers Muscling up in the Autumn Storms & a Fold of Sheep

Calm as a Concubine, 2023

oil on canvas laid on board, 15 × 18 inches



Melita Denaro
Tears come not from cowardice but from sorrow, 2010
oil on panel, 9 × 14½ inches



Melita Denaro

Young Martin honing our culinary skills, easy in each others
company. Big winds rattling the windows, 2015
oil on panel, 7¼ x 8¾ inches



Melita Denaro

Trying to Drive through a rainbow on the road, mid-November, 2024
oil on panel, 7¼ x 8¾ inches



Melita Denaro

Two Kings only in the sky this year. Feast of Epiphany, 2010
oil on panel, 7¼ x 8¾ inches



Melita Denaro
A Sight to Gladden the Heart, 2013
oil on panel, 11 × 13½ inches



Melita Denaro
Always my friend my steadfast work, May, 2013
oil on panel, 11 × 13½ inches

Olivia Musgrave



Olivia Musgrave was born in Dublin in 1958 to an Irish father and a Greek mother, a heritage that sparked a lifelong fascination with storytelling and Greek mythology—interests that have deeply influenced her career as a sculptor. For Musgrave, mythology offers a rich tapestry for exploration, where ancient stories remain ever-relevant, weaving together the past and present with timeless resonance. She describes these ancient tales as “a sort of dramatic shorthand... The creation of life and the mystery of death are themes that continue to baffle modern man, and I am interested in how ancient stories still have relevance in our lives.”. A recurring theme in her work is the intimate relationship between the Amazon warrior and her horse, a mutual sympathy in which each can completely understand the other on a profound level. Musgrave explains, “It is an other-worldly bond that transcends species and perfectly represents what the mythical world is able to convey.”

Olivia Musgrave is a Fellow of the Royal Society of British Sculptors and a former President of the Society of Portrait Sculptors. Her work is held in private and public collections in both Ireland and the United Kingdom.



Olivia Musgrave
Standing Amazon with a Flower, 2024
bronze edition of 9, 28½ x 21¼ x 7½ inches



Olivia Musgrave
A Private Moment, 2024 (*detail*)
bronze edition of 9, 13 × 22¾ x 5½ inches



Olivia Musgrave
Horse, 2009
bronze edition of 9, 22 × 24³/₄ × 7 inches



Olivia Musgrave
Fly me to the Moon, 2024
bronze edition of 9, 18 × 22 × 10½ inches

Anne Magill



Anne Magill grew up on a family farm on the Ards Peninsula in Northern Ireland, before moving to England to study at St Martin's School of Art. She soon gained international recognition for her dramatic, pared-back paintings and charcoal drawings. Her work, often resembling found photographs, depicts anonymous figures in intimate scenes, suggesting a story or memory just out of reach—or a personal significance now lost.

This sense of intrigue is the result of Anne's meticulous process, in which each painting evolves over months, sometimes years, as she revisits and refines it, searching for that elusive moment of resolution. Anne's ability to observe and empathize with people's lives shapes her art. Her work goes beyond technical perfection, instead focusing on the poetry of an image—asking why a photograph survives, and what it means.

Through her paintings, Anne invites viewers into a world of silent, untold stories, where every image provokes reflection and leaves space for personal interpretation.



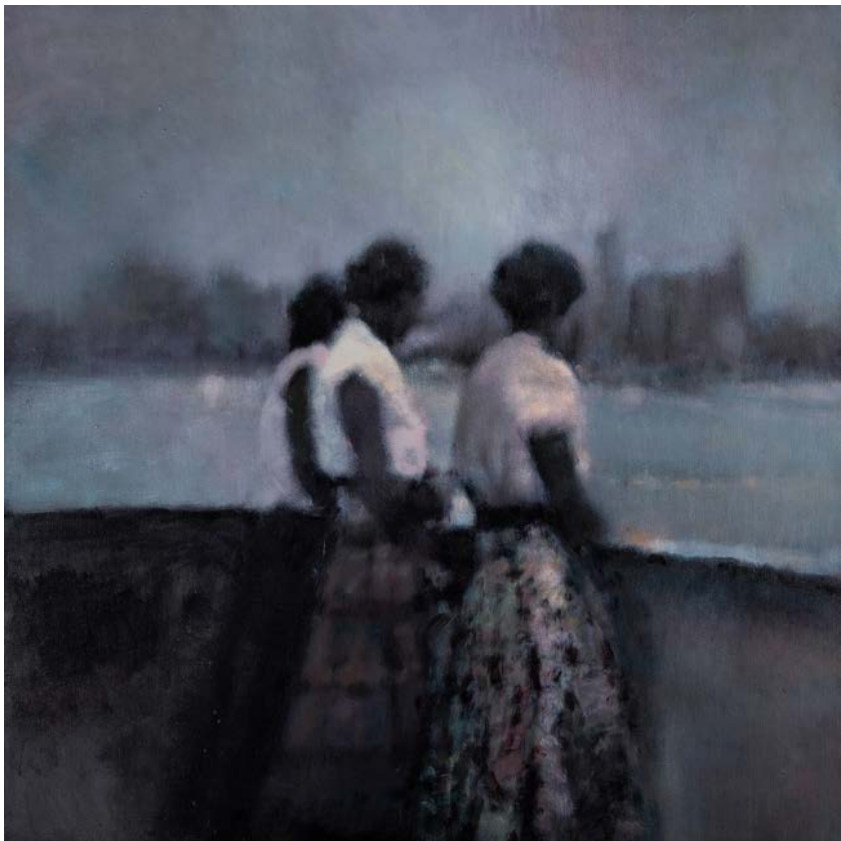
Anne Magill
A Glance, 2025
oil on canvas, 39¼ x 39¼ inches



Anne Magill
Water's Edge, 2025
oil on canvas, 39¼ x 39¼ inches



Anne Magill
Sunday Morning, 2025
oil on canvas, 39¼ x 39¼ inches



Anne Magill
The Three, 2024
oil on canvas, 39¼ x 39¼ inches



Anne Magill
Winter Morning, 2023
oil on canvas, 36¼ x 48 inches



Anne Magill
Shelter, 2024
charcoal on paper, 8¼ x 11¾ inches



Anne Magill
With You, 2024
charcoal on paper, 8¼ x 11¾ inches



Anne Magill
Winter Morning study, 2025
charcoal on paper, 10½ x 13 inches

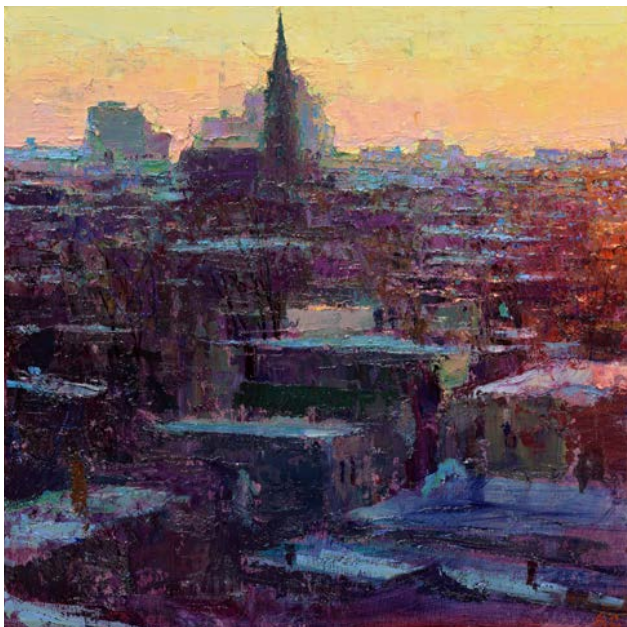
Andrew Gifford



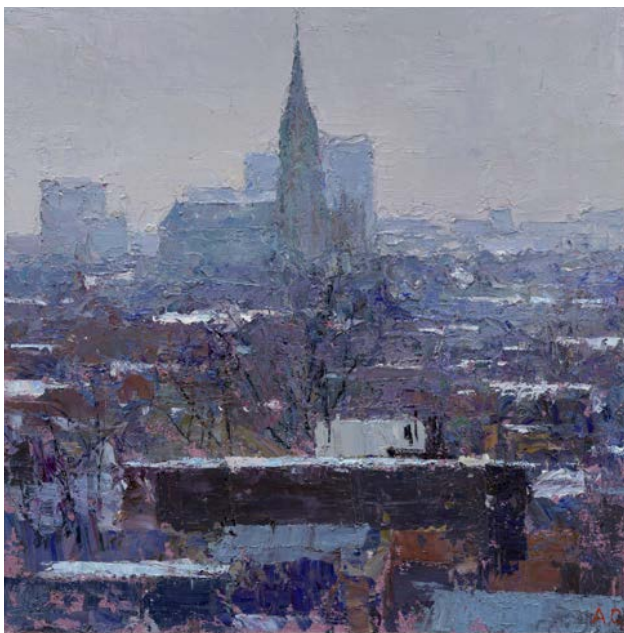
Andrew Gifford is known for his innovative paintings and light installations inspired by the landscape. His work has been widely exhibited, including solo shows at Leeds City Art Gallery (2004), Fruitmarket Gallery Edinburgh (2001), and Middlesbrough Art Gallery (2000). In 2014, his exhibition *Two Cities: Paintings of Jerusalem and Ramallah* toured with the British Council to the Al-Ma'mal Foundation in Jerusalem and the A.M. Qattan Foundation in Ramallah. That year, he also exhibited *Cities of the Northeast* at the University of Northumbria, and in 2016, his *New York Paintings* were shown at Spring Masters in New York. Other exhibitions have been held in Hong Kong, Singapore, and Houston. His work is part of collections at the New Art Gallery, Walsall, Chatsworth House, and private collections across Europe, the USA, and Asia. Recent exhibitions at Cromwell Place focussed on woodland, rainforest and scrub ecosystems. At Expo Chicago we are showing a series of paintings made in Chicago in the winter of 2024.



Andrew Gifford
St Michael's Church from Hotel Lincoln V, 2023
oil on panel, 12½ x 11¾ inches



Andrew Gifford
St Michael's Church from Hotel Lincoln IV, 2023
oil on panel, 12½ x 11¾ inches



Andrew Gifford
St Michael's Church from Hotel Lincoln I, 2023
oil on panel, 12½ x 11¾ inches



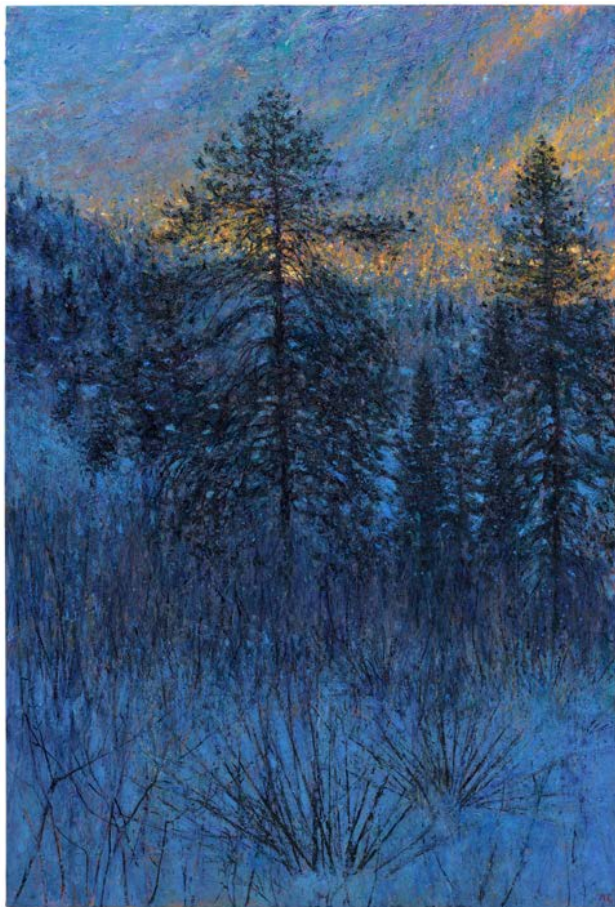
Andrew Gifford
St Michael's Church from Hotel Lincoln III, 2023
oil on panel, 12½ x 11¾ inches



Andrew Gifford
View from Hotel Lincoln Chicago 1, 2023
oil on panel, 12½ x 12¼ inches



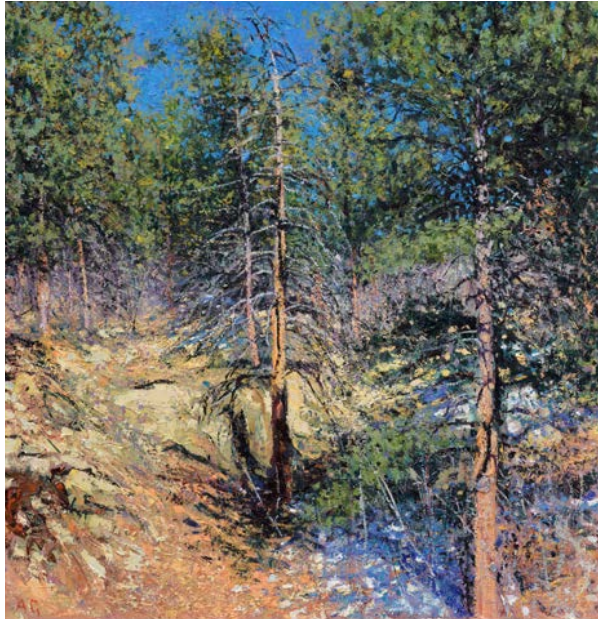
Andrew Gifford
Sunlight on the Pines and Aspen, Mueller State Park, 2023
oil on panel, 15 × 18½ inches



Andrew Gifford
First Light at Green Mountain Falls, Colorado, 2023
oil on canvas, 50 × 34 inches



Andrew Gifford
Study for Blue Hill, Maine, 2023
oil on panel, 14¼ x 15 inches



Andrew Gifford
Dead tree with melting snow, Rockies, 2023
oil on panel, 15¼ x 15 inches