

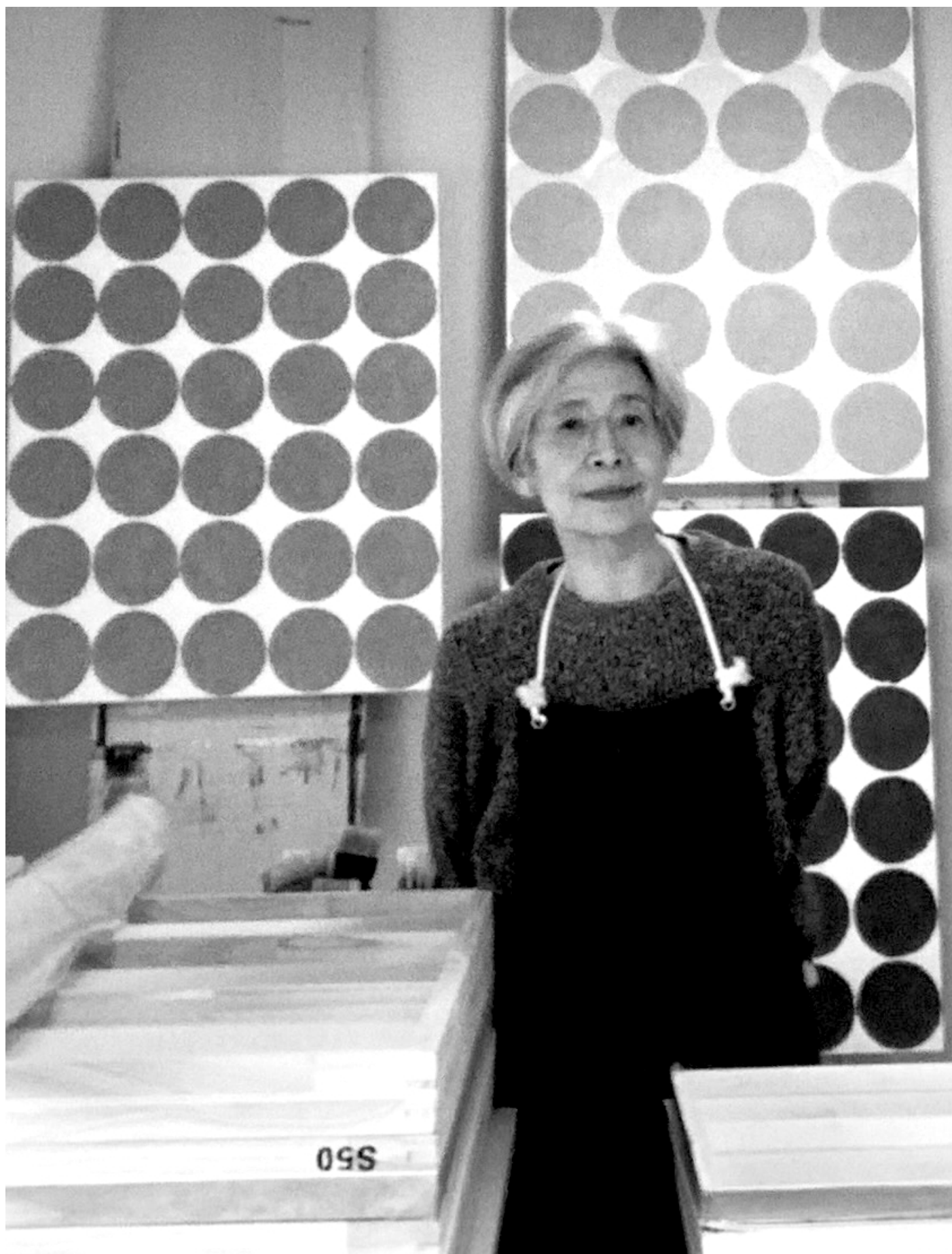


Makiko Nakamura

John Martin Gallery

Makiko Nakamura

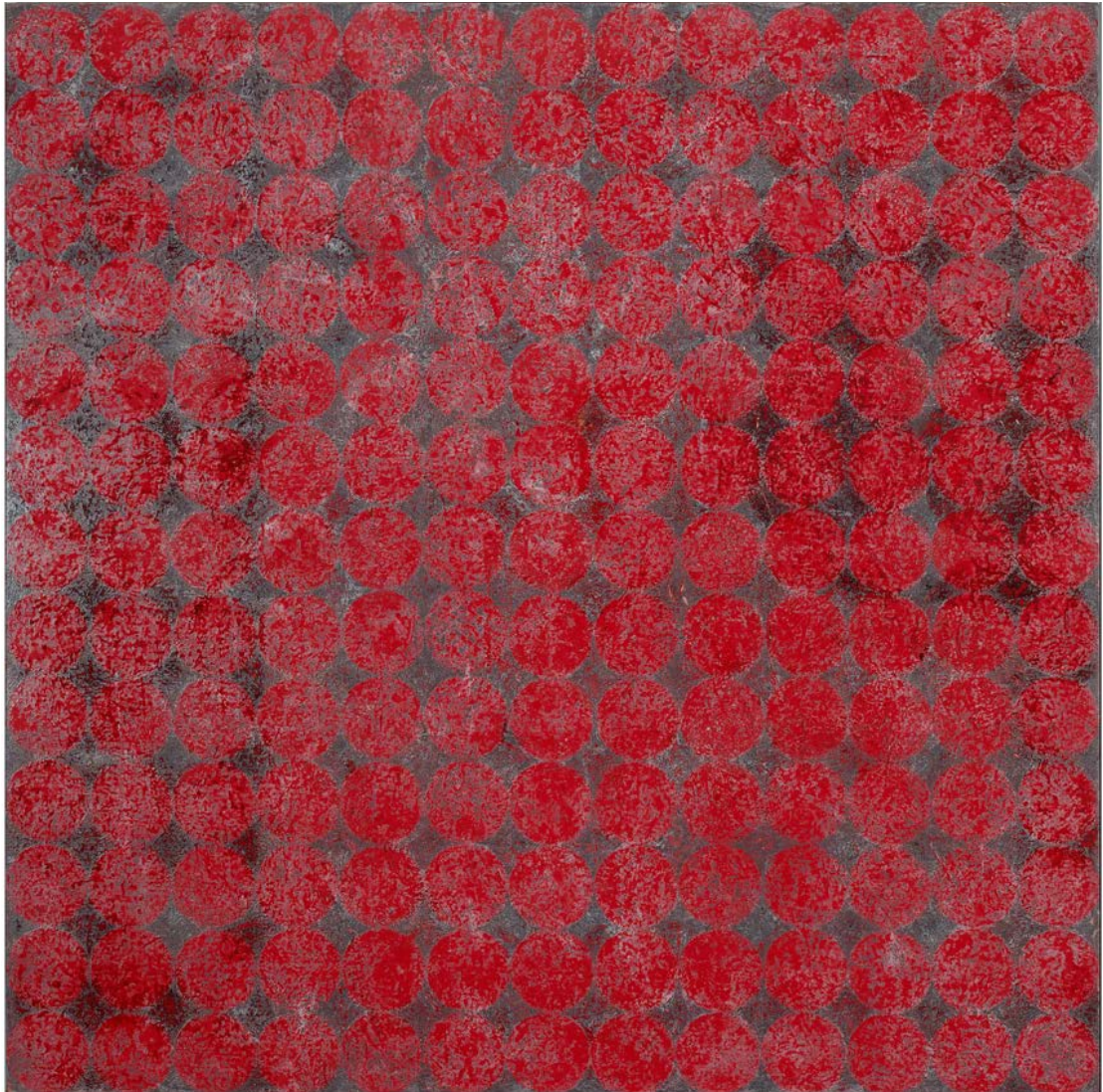
John Martin Gallery



Makiko Nakamura was born in Japan in 1951. She was brought up by her Grandparents who encouraged her to paint from a very early age. Her Grandfather and her Uncle were both artists and the house was filled with their painting materials which she was taught to use, learning the techniques of calligraphy and traditional Japanese painting. As an only child, she described painting becoming her best friend and consuming her daily life.

In 1966 she went to art school in Kyoto to study printmaking, sculpture, film-making and painting, before working as a film editor. After the death of her Mother in 1995 she moved to Paris to resume her studies in painting and printmaking and then to Philadelphia to study at the Graduate School of Fine Arts at the University of Pennsylvania. In 1999 she made the decision to move to Dublin where she lived and worked until 2013, taking Irish citizenship in 2011. Examples of her work from this period can be seen at the Irish Museum of Modern Art as well as two major works commissioned for the Gate Theatre.

Throughout her fourteen years in Ireland and ever since her return to Japan in 2013, Makiko Nakamura's studio practice has remained constant. She refers to her canvases as her 'slow paintings', each one following the same steady process over several months: a single, repeating pattern or a block of colour left to dry before being overpainted with another and another, until she stops painting and begins to work her way back through the different layers. Her tightly controlled, painstaking technique she likens to archaeology, a process that allows her to see through time, revisiting memories hidden in the work. From their simple, minimalist beginning each painting takes on a more organic and expressive character. The emotional and artistic decisions of preceding months, once covered, reappearing as tantalising glimpses through the painting's history.



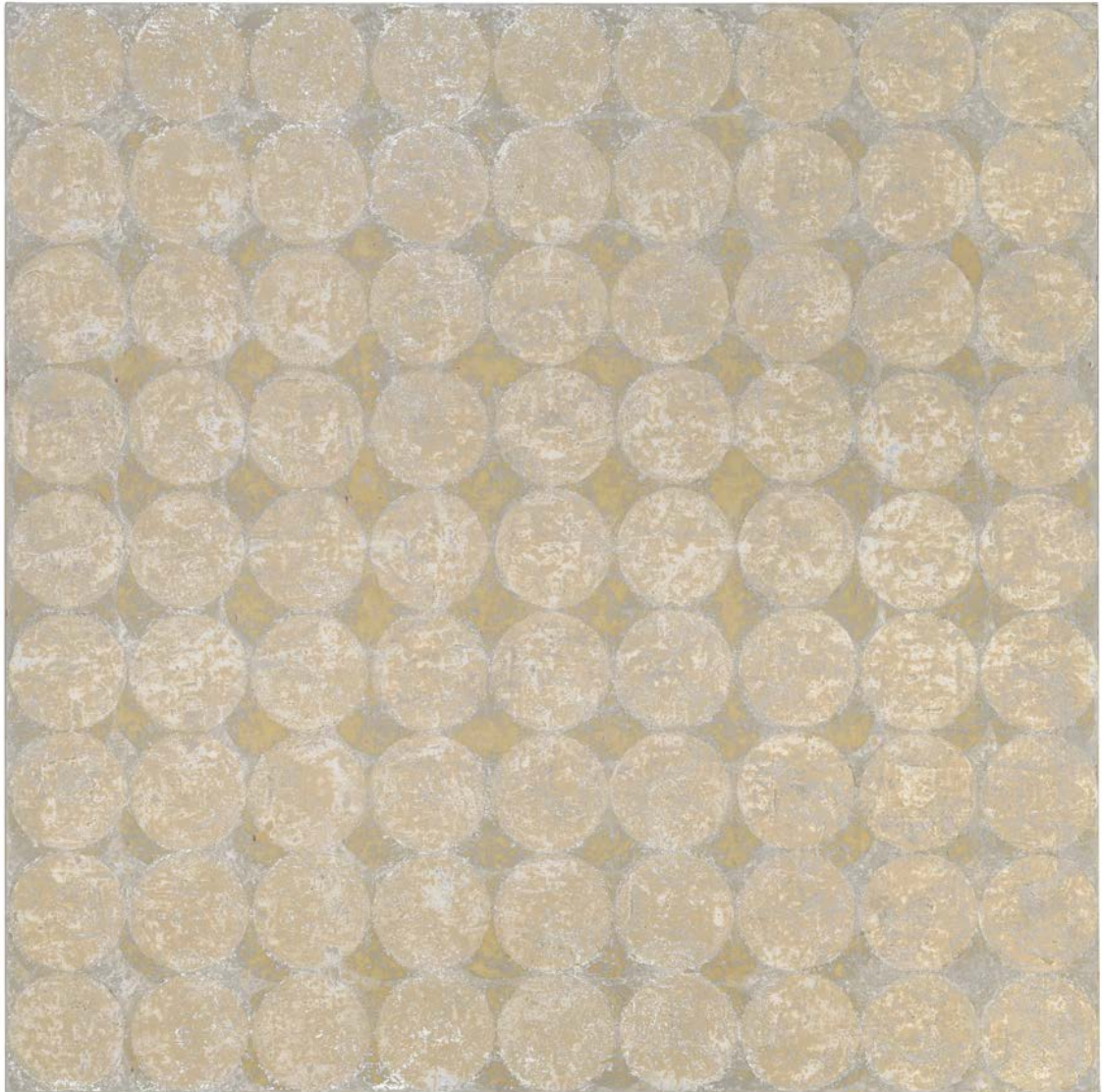
Faun (2021)
oil and metal leaf on canvas
46 x 46 inches, 117 x 117 cms



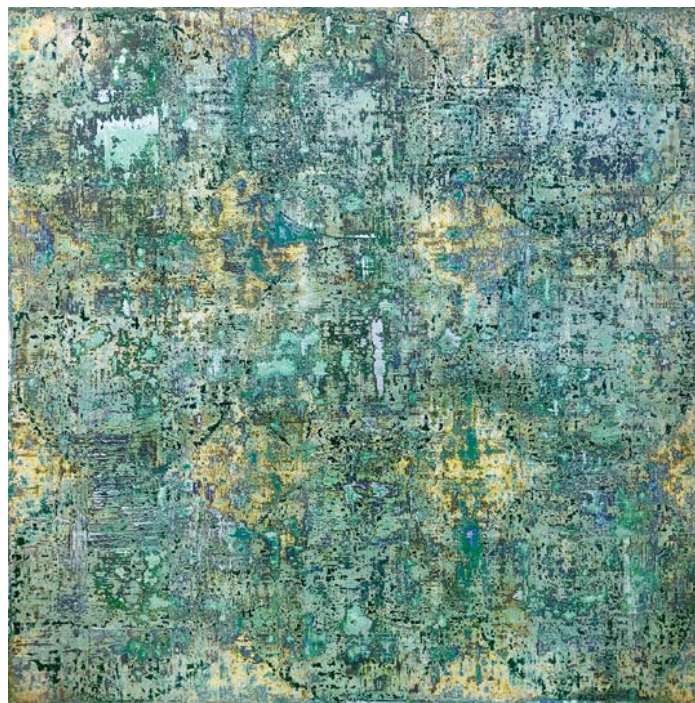
Aldebaran (2024)
oil and metal leaf on canvas
46 x 46 inches, 117 x 117 cms



Irish Blue (2024)
oil and metal leaf on canvas
46 x 46 inches, 117 x 117 cms



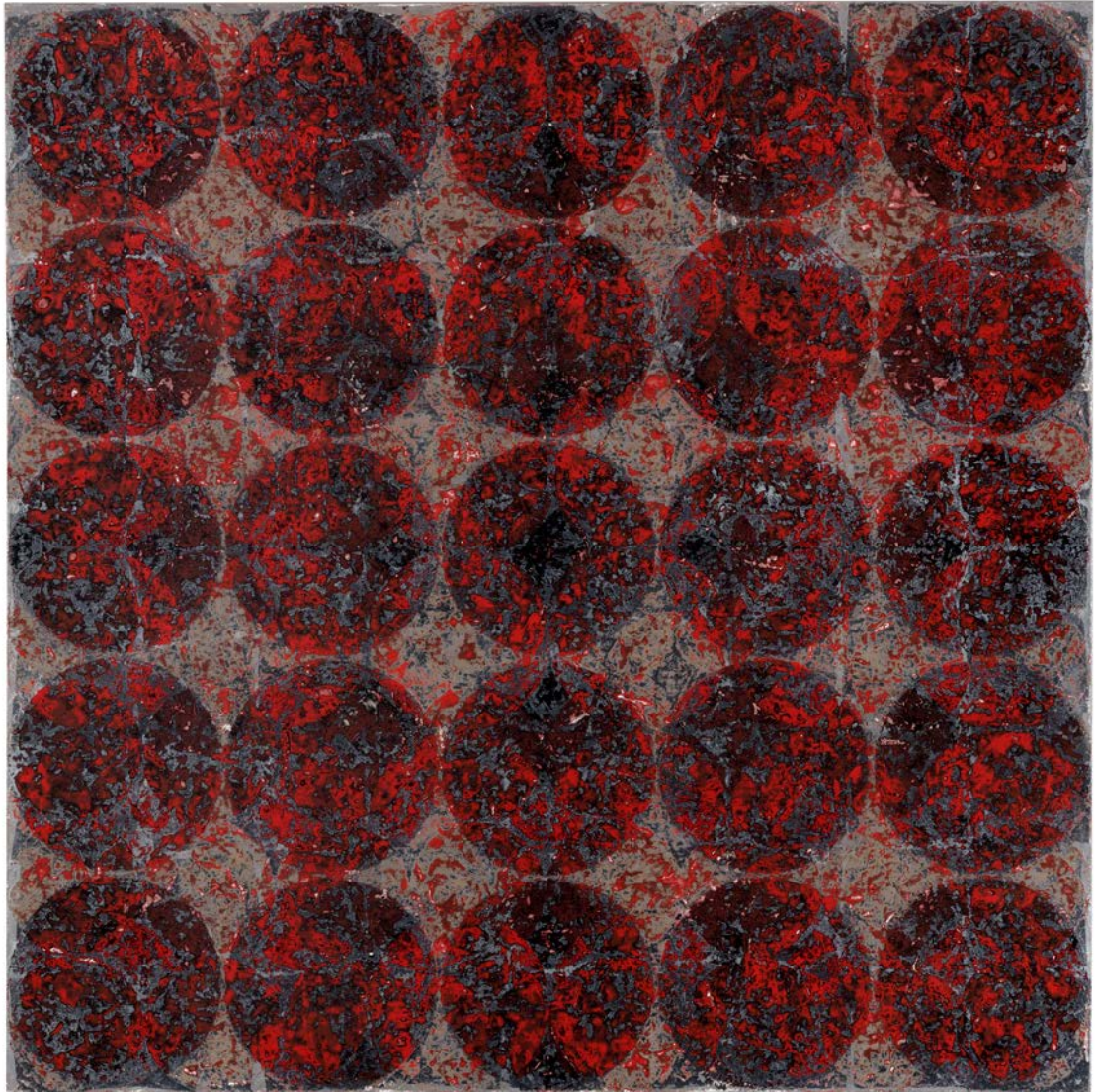
Floating Memories (2024)
oil and metal leaf on canvas
46 x 46 inches, 117 x 117 cms



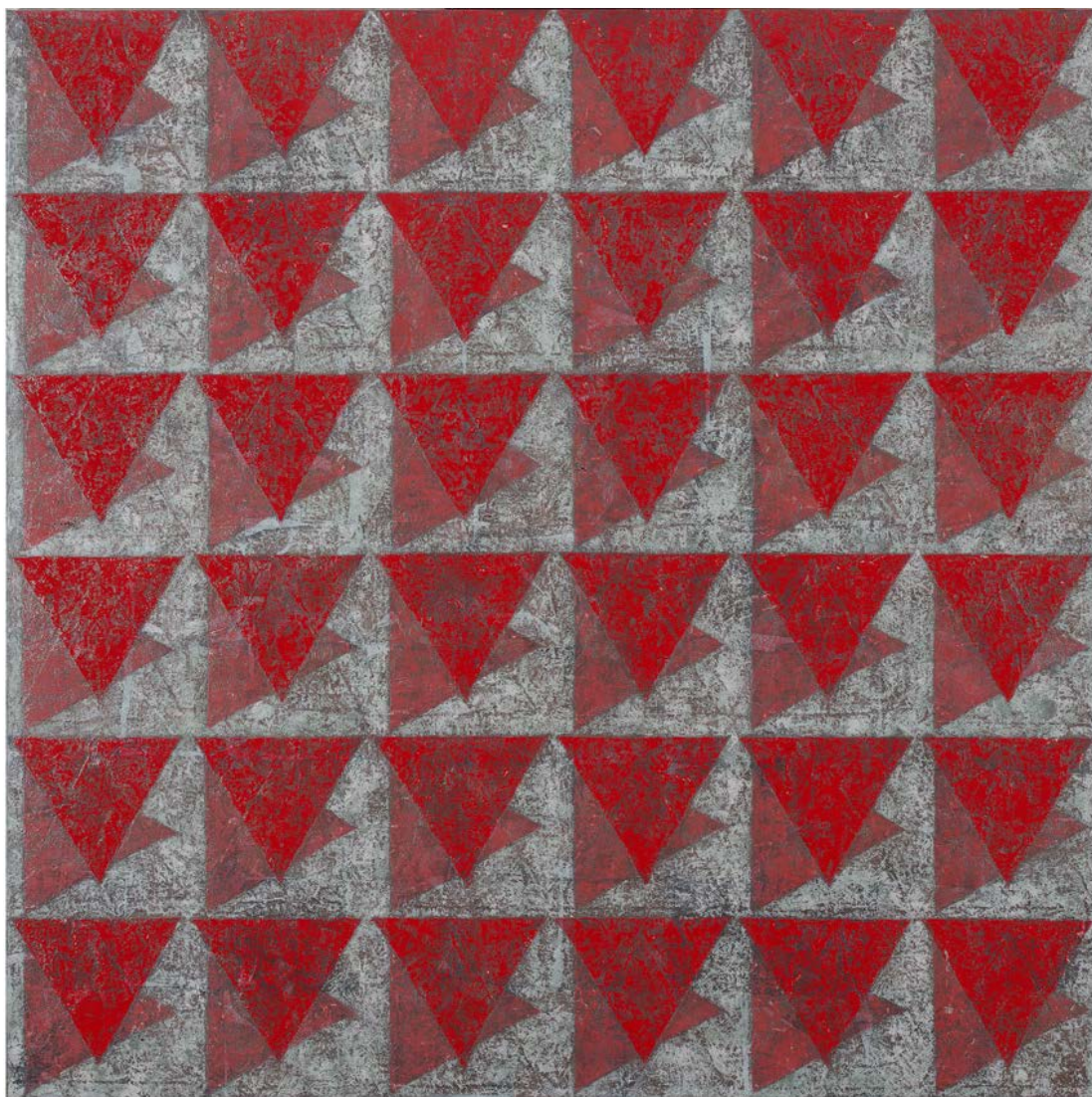
Looking for Cheshire Cat (2015)
oil and metal leaf on canvas
18 x 18 inches, 46 x 46 cms



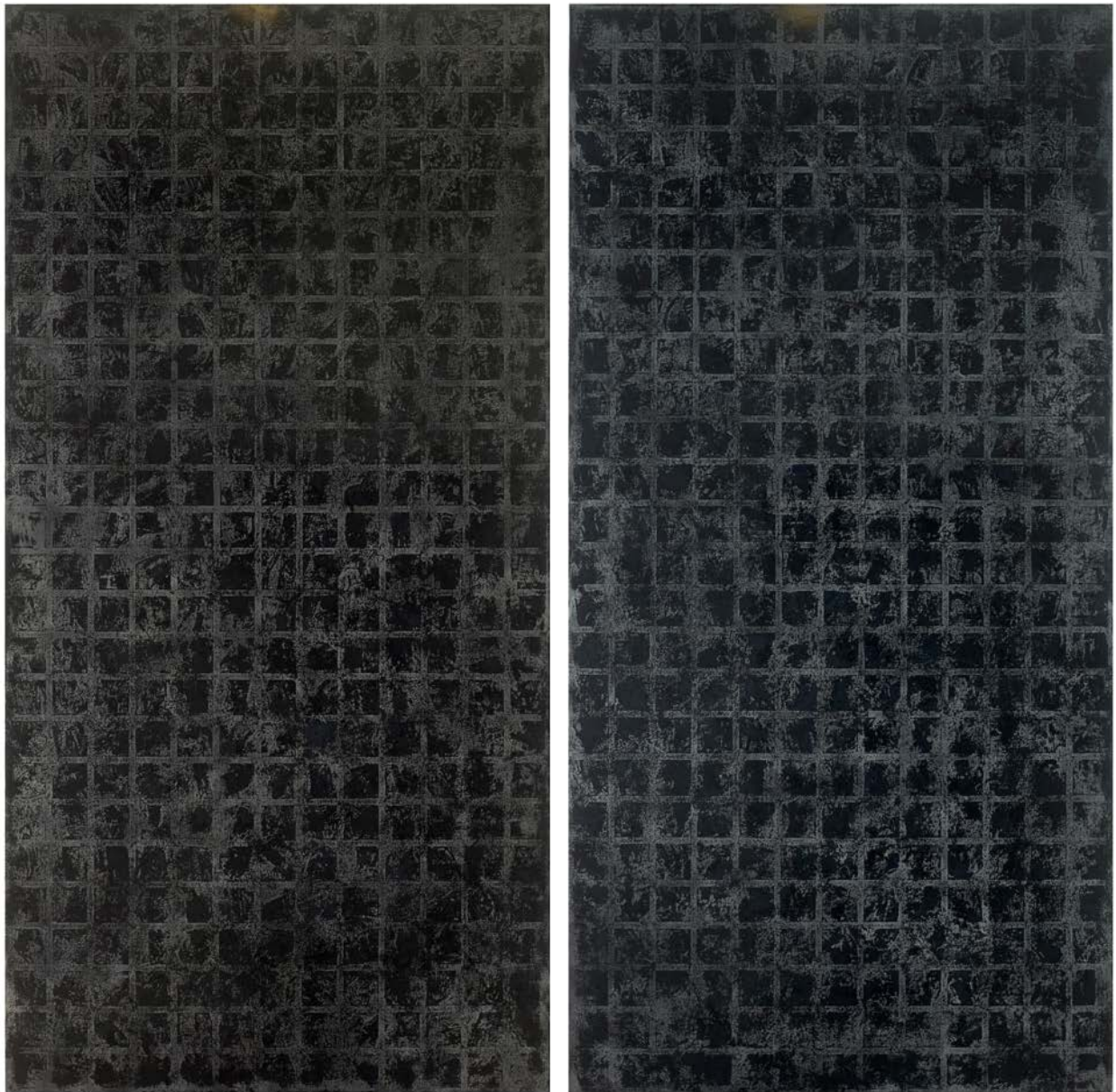
Dancing with Moon (2015)
oil and metal leaf on canvas
18 x 18 inches, 46 x 46 cms



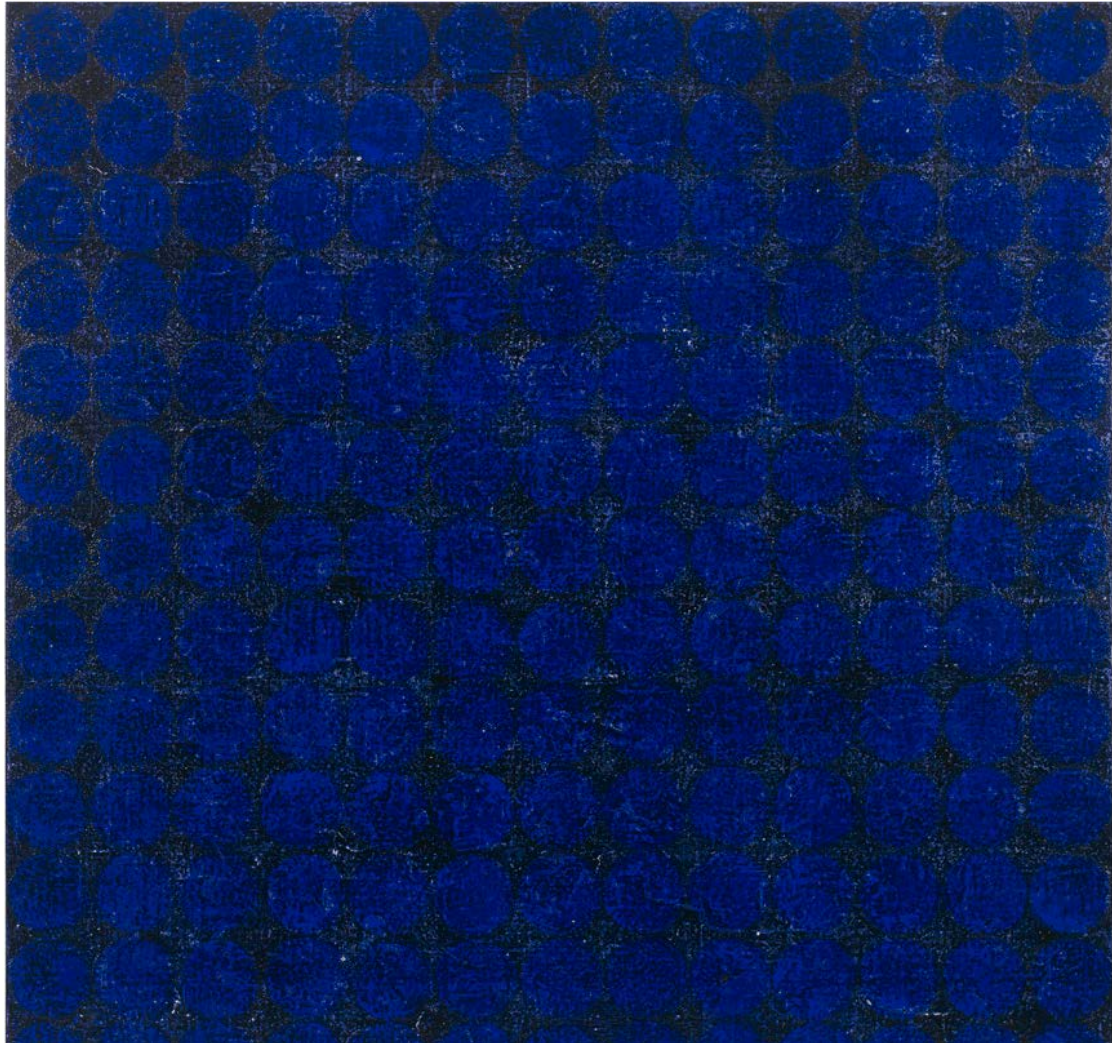
Red Fugue (2024)
oil and metal leaf on canvas
46 x 46 inches, 117 x 117 cms



Kites (2021)
oil and metal leaf on canvas
46 x 46 inches, 117 x 117 cms



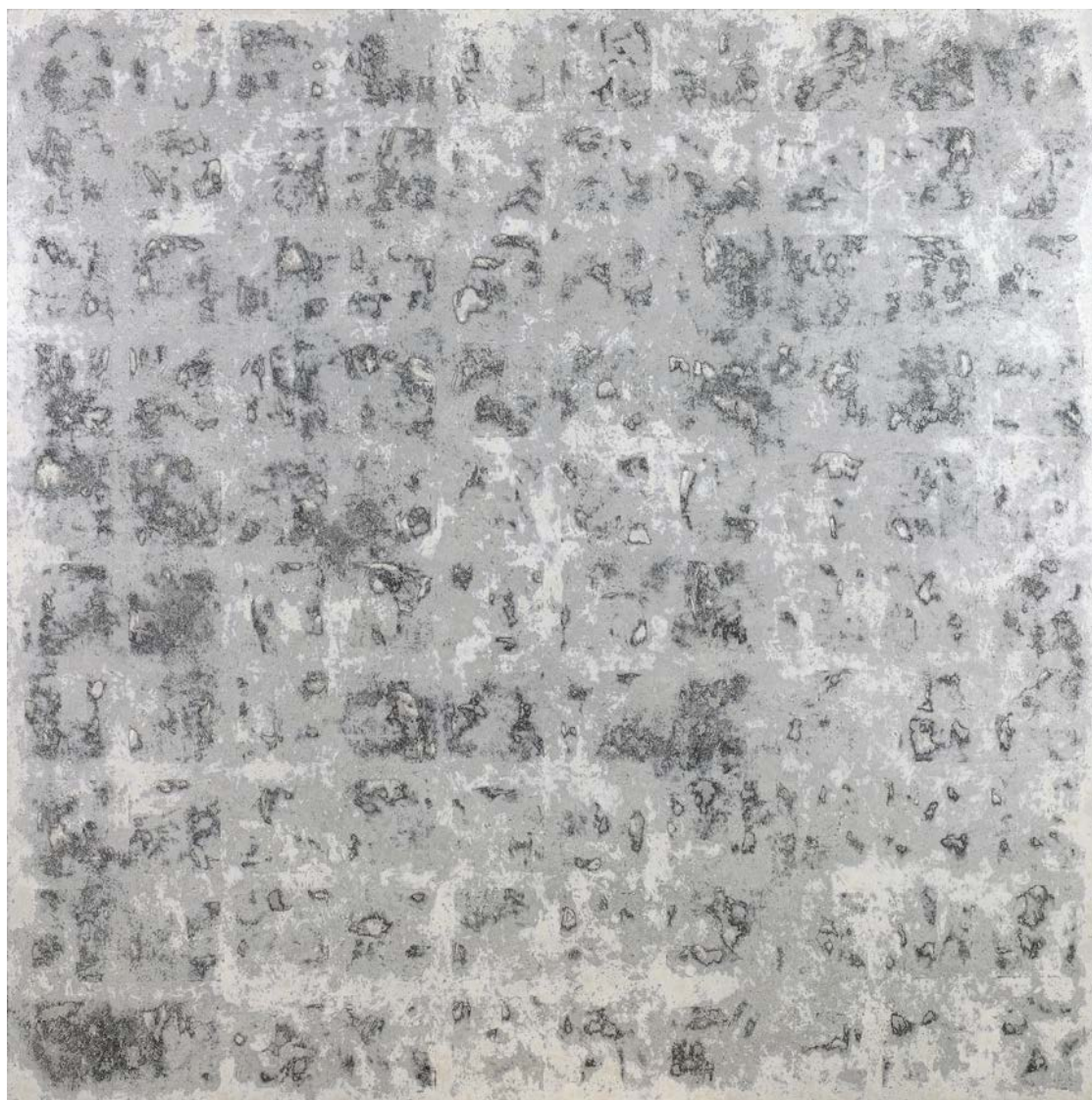
Passage (2011)
oil and metal leaf on canvas, diptych
76 ½ x 76 ½ inches, 194 x 194cms



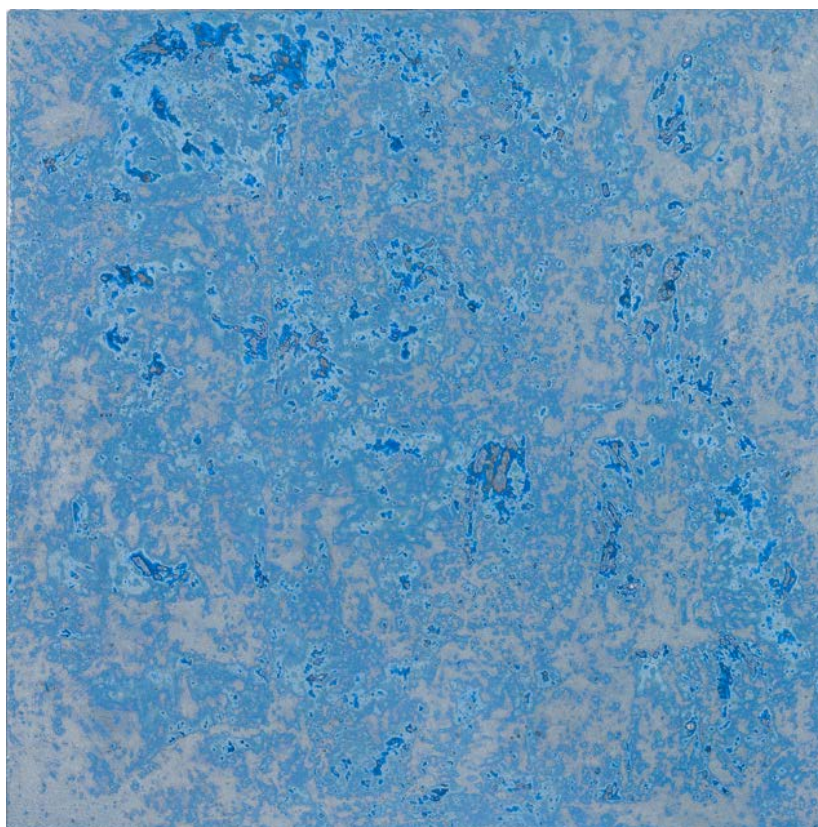
Blue Flickering Invitation from Aquarius (2016)
oil and metal leaf on canvas
47¼ x 47¼ inches, 120 x 120 cms



A Lullaby in July (2013)
oil and metal leaf on canvas
46 $\frac{3}{4}$ x 46 $\frac{3}{4}$ inches, 119 x 119 cms



A Lullaby in May (2012)
oil and metal leaf on canvas
47 ¼ x 47 ¼ inches, 120 x 120 cms



Happy Birthday (2013)
oil and metal leaf on canvas
17¾ x 17¾ inches, 45 x 45 cms



Valentine's Day (2010)
oil and metal leaf on canvas
18 x 18 inches, 45.5 x 45.5 cms



A Call (2011)
oil and metal leaf on canvas
23 ½ x 23 ½ inches, 60 x 60 cms



Rings of Saturn (2018)
oil and metal leaf on canvas
24 x 24 inches, 61 x 61 cms



Venus (2024)
oil and metal leaf on canvas
46 x 46 inches, 117 x 117 cms

Public Collections

Irish Museum of Modern Art; The Gate Theatre; Wexford Opera House;
The Office of Public Works, Ireland; National Self-Portrait Collection, Univ. of
Limerick; Limerick City Gallery of Art, Boyle Civic Collection;
AXA insurance; The American College, Bryn Mawr, Pennsylvania, USA;
Cite Internationale des Arts, Paris, Franc; Centre Culturel Lutherien de Paris,
France

Solo Exhibitions

2024 *When Stars are Born*, John Martin Gallery, London
2023 *Paintings from Ireland*, Spirit Studios, Suffolk
2022 *Rondo*, John Martin Gallery, London
2022 *Wings, Moons and Love Songs*, Taylor Galleries, Dublin, Ireland
2019 *Cassini's Journey*, John Martin Gallery, London
2019 *Love Song*, Taylor Galleries, Dublin, Ireland
2017 *Moons of Jupiter*, John Martin Gallery, London
2014 *Room*, John Martin Gallery, London
2013 *Paintings 2011-2013*, John Martin Gallery, London
2012 Gallery, Belfast, Northern Ireland
2012 Marchand d'art, Zurich, Switzerland
2011 *Passage'*, Taylor Galleries, Dublin, Ireland
2010 *Place*, John Martin Gallery, London
2009 Fenderesky Gallery, Belfast, Northern Ireland
Peppercanister Gallery, Dublin, Ireland
2007 Fenderesky Gallery, Belfast, Northern Ireland
Glebe Gallery, Donegal, Ireland
Peppercanister Gallery, Dublin, Ireland
2006 Farmleigh Gallery, Dublin, Ireland
Peppercanister Gallery, Dublin, Ireland
2005 John Martin Chelsea, London, UK
Fenderesky Gallery, Belfast, Northern Ireland
2004 Peppercanister Gallery, Dublin, Ireland
2003 Ashford Gallery, RHA, Dublin, Ireland
2002 Fenderesky Gallery, Belfast, Northern Ireland
Peppercanister Gallery, Dublin, Ireland
2001 Riverbank Arts Centre, Newbridge, Co.Kildare
1999 The American College, Bryn Mawr, Pennsylvania,
1998 Morris Arboretum Gallery of the University of Pennsylvania, USA
1997 Cloitre des Billette, Paris, France (Part of *The Japan Year* in France)
1996 Gallery Kozuka, Nagoya, Japan, (also in '95, '94, '93, '89)
1995 Gallery 16, Kyoto, Japan (also in '94, '91, '90, '89, '88, '87, '86)
1987 ON Gallery, Osaka, Japan
1986 Gallery Space to Space, Gallery Love collection, Nagoya, Japan

Group Exhibitions

2020 Preview, Cromwell Place, London
2019 The Winter Show, John Martin Gallery, London
2018 The Summer Show, John Martin Gallery, London
2012 Arte Fiera, Bologna, Italy, John Martin Gallery ('11)
2012 *Silvers and Golds*, John Martin Gallery, London, UK
2011 Group show, Taylor Galleries, Dublin, Ireland
ART ATHINA, John Martin Gallery, Greece
2011 Arte Fiera, John Martin Gallery, Bologna
2010 ART ATHINA, John Martin Gallery, Greece
RHA Annual Exhibition, Dublin, Ireland (also in '09, '08, '07, '04, '03, '02)
Boyle Arts Festival, Boyle, Ireland (also in '09, '05, '04, '03)
2009 *Storylines*, John Martin Gallery, London, UK

2008	Familiar Faces, Bourn Vincent Gallery, Univ.of Limerick, Ireland RUA Annual Exhibition, Belfast, Northern Ireland
2006	Art in State Buildings, Tour Exhibition of Government of Ireland RHA Gala Banquet Exhibition, Dublin, Ireland (also in '04, '03)
2004	Invited artists exhibition, Cavanacor Gallery, Donegal, Ireland
2001	Two painters show, Peppercanister Gallery, Dublin, Ireland The Irish Connection, View Two Gallery, Liverpool, UK Three painters show, Ashford Gallery, RHA, Dublin, Ireland
1999	Summer Exhibition, Hira Museum of Arts, Shiga, Japan
1998	Large Print Exhibition, Meyerson Hall Gallery of the Univ.of Pennsylvania, USA
1997	Three persons show, Deans Gallery of the Univ.of Pennsylvania, USA L'Exposition Collective, Cite Internationale des Arts, Paris, France
1995	Direction of Art 95, Osaka Prefectural Contemporary Arts Centre, Japan



Farmleigh Gallery, 2006

Education

1996	L'Atelier Contre Point (print making) Paris, France
1982	Nagoya Art School, Nagoya, Japan
1970-72	Kyoto Seika Junior College, the Fine Arts department, Kyoto, Japan
1967-70	Kanou Senior High School, the Arts Course, Gifu, Japan

Awards & Residencies

2010	Per Cent for Art Scheme at the Gate Theatre, Dublin, Ireland
2003-6	Membership of Temple Bar Gallery and Studios, Dublin , Ireland
2000-1	Agency for Cultural Affairs Government of Japanese Research Fellowship
1999-02	Residency at the Fire Station Artists' Studios, Dublin, Ireland
1997 – 98	The post graduate school of Fine Arts of the University of Pennsylvania (as a visiting artist) Philadelphia, USA
1997	Residency at Cite Internationale des Arts Studios, Paris, France
1986	Fine work prize ” the 16th International Art Exhibition Japan” Fine work prize ” the 7th Contemporary Japan Art Exhibition”



Retrospective, Spirit Studios, 2023

John Martin Gallery
38 Albemarle Street, London, W1S 4JG
United Kingdom

All images copyright Makiko Nakamura
Photography Matt Pia and Doug Atfield
Enquiries: Mashie Agnew, mashie@jmlondon.com
John Martin Gallery
T +44 (0)20 7499 1314 info@jmlondon.com
Instagram and Facebook updates [@johnmartingallery](#)
www.jmlondon.com