



–Andrew Gifford
London Landscapes

18 July – 18 August 2012

John Martin Gallery

38 Albemarle Street
London, W1S 4JG

+44 (0)20 7499 1314
info@jmlondon.com

Mon-Fri 10-6, Sat 11-4
www.jmlondon.com

The choice of locations for the London Landscapes was, as ever, mainly practical. There is nothing significant to link Gravesend, Green Park, Finchley Road or the Southbank, other than they provided Andrew Gifford a space to work relatively undisturbed and within reach of a base – a friend's flat, the gallery storeroom, or, the kindly National Theatre – where Gifford could leave paints, dry panels or warm up. The process of painting for him becomes not about hunting for a view, but selecting a viewpoint and a direction that might provide an opportunity to record a particular moment of light as it hits a building or fuses with the sky. As in all his work, the presence of a landmark becomes incidental and entirely secondary to the artist's over-riding fascination with light and his remarkable ability to select and capture the briefest moment in an oil sketch.

Light alters constantly and effects every element of the painting, so the decisions have to be instantaneous. The shadowless, grey tones of a London street has its own familiar beauty, just as miraculous in its way as the explosion of golden light as the low evening sun finally punctures that ever-present blanket of cloud. The City also conjures up its own second twilight when the dying sunshine fades away not into night, but the nocturnal dawn of traffic, restaurant neons, street lamps and the insistent glow of the office. It is an exquisite drama that unfolds equally across every postcode. Gifford's project has been to record the City in its simplicity, not as a series of landmarks but as a landscape, recording London through the single, ever-present element with which we are most deeply familiar.

John Martin

FRONT COVER:

—*From Southbank Towards the City 2*, 2012

oil on canvas

180 x 145 cm, 70 $\frac{3}{4}$ x 57 ins

OPPOSITE:

—*From Southbank Towards the City 1*, 2012

oil on canvas

180 x 145 cm, 70 $\frac{3}{4}$ x 57 ins





—*From Southbank Towards the City, Study 1, 2012*
oil on panel
21 x 22 cm, 8¼ x 8¾ ins



—From *Southbank Towards the City, Study 2*, 2012
oil on panel
21 x 22 cm, 8¼ x 8¾ ins



—From *Southbank Towards the City, Study 3*, 2012
oil on panel
21 x 22 cm, 8¼ x 8¾ ins



—From *Southbank Towards the City, Study 4*, 2012
oil on panel
21 x 22 cm, 8¼ x 8¾ ins



—From *Southbank Towards the City study 5*, 2012
oil on panel
40 x 50 cm, 15³/₄ x 19³/₄ ins

—From *Southbank Towards the City 1*, 2012
oil on canvas
180 x 145 cm, 70¾ x 57 ins



—*From Southbank Towards the City 2*, 2012
oil on canvas
180 x 145 cm, 70¼ x 57 ins



—From *Southbank Towards the City 3*, 2012
oil on canvas
180 x 145 cm, 70¼ x 57 ins





—*Green Park, Blue Haze*, 2012
oil on panel
38 x 40 cm, 15 x 15 $\frac{3}{4}$ ins

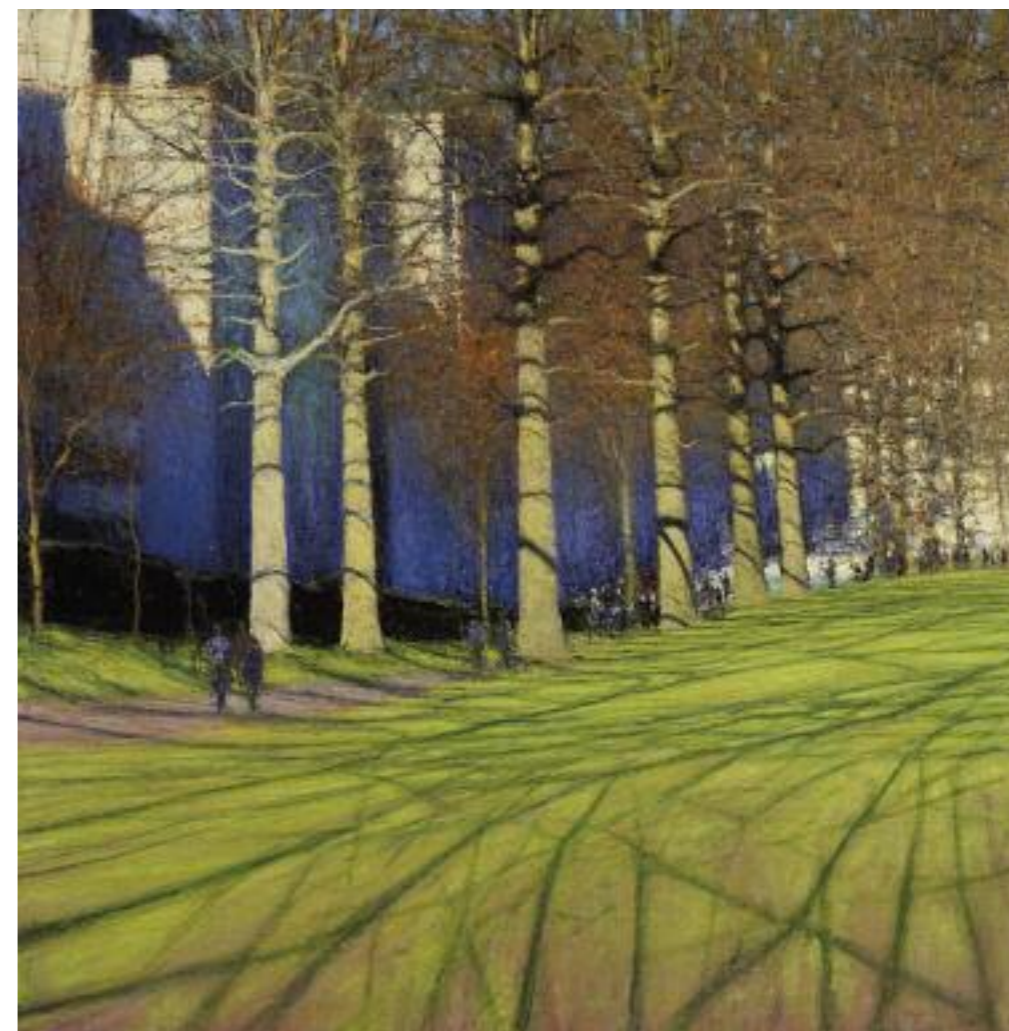


—*Green Park Trees & Shadows*, 2012
oil on panel
29 x 30 cm, 11½ x 11¾ ins



—*Green Park with Shadow of Tree*, 2012
oil on panel
25.5 x 25 cm, 10 x 9¾ ins

—*Green Park*, 2012
oil on panel
162 x 162 cm, 63¾ x 63¾ ins



—*Hyde Park Corner, Late Winter*, 2012
oil on panel
25.5 x 25 cm, 10 x 9¼ ins





—*Cenotaph*, 2012
oil on panel
23 x 24 cm, 9 x 9½ ins



—*Towards Trafalgar Square*, 2012
oil on panel
54 x 55.5 cm, 21¼ x 21¾ ins



—*From Victoria*, 2012
oil on panel
29 x 29 cm, 11½ x 11¾ ins

—*The Playhouse, Northumberland Avenue*, 2012
oil on panel
38 x 40 cm, 15 x 15¾ ins



—*Stroud Green Road*, 2012
oil on panel
33.5 x 33.5 cm, 14 x 13¼ ins

—*Finsbury Park*, 2012
oil on panel
33.5 x 33.5 cm, 14 x 13¼ ins



—*Berwick Street*, 2012
oil on panel
29 x 29 cm, 11 $\frac{3}{4}$ x 11 $\frac{1}{2}$ ins



—*The Power Station from Gravesend*, 2012
oil on panel
45.5 x 47.5 cm, 18 x 18³/₄ ins



—*Gravesend*, 2012
oil on panel
52.5 x 54 cm, 20³/₄ x 21¹/₄ ins



ANDREW GIFFORD

b. 1970

SOLO EXHIBITIONS

- 2011 Spring- Amman, John Martin Gallery, London
Pigment & Light, Phoenix Gallery, Brighton
- 2010 Budapest, John Martin Gallery, London
- 2010 Looking West from Albert Embankment, London Art Fair
- 2008 Istanbul Light Series, ArtLondon
- 2007 Tyne Bridge Tower Paintings, John Martin Gallery, London
- 2006 Ganzfeld Ball Installation, London Art Fair, Arts Projects
- 2005 Paris Paintings 1, John Martin Gallery, London
Paris Paintings 2 & Dordogne Landscapes, John Martin Chelsea
- 2004 Leeds /Bradford Paintings part of 'Tales of the City', Leeds City Art Gallery
London Street Paintings, John Martin Chelsea
Andrew Gifford at the London Art Fair, Business Design Centre, Islington
- 2003 Fontaine Evening Paintings, Art London
- 2002 Berlin Paintings, John Martin Gallery, London
- 2001 Retrospective, Fruitmarket Gallery, Edinburgh
- 2000 Paintings from the Sellamoto Studio, Middlesbrough Art Gallery
- 1999 The Limehouse Series, ArtLondon, Duke of Yorks Barracks
- 1998 Recent paintings, John Martin Gallery, London
- 1993 Artist in Focus, Middlesbrough Art Gallery

GROUP EXHIBITIONS

- 2010 Art Athina, John Martin Gallery, Greece
- 2008 Changing Landscapes, John Martin Gallery, London
- 2000 Blue, The New Art Gallery, Walsall
French Painting, Art2000, Business Design Centre, Islington
- 1998 Art98, Business Design Centre, Islington
- 1997 Fifty and One, John Martin Gallery, London
The Discerning Eye, selected by Susan Moore, Mall Galleries, London
On a Grand Scale John Martin Gallery, London
Northern Lights, Fruitmarket Gallery, Edinburgh
Art 97, Business Design Centre, Islington
- 1996 Winter Exhibition, John Martin of London
Society of Scottish Artists Annual Exhibition, R.S.A. Edinburgh
Selected Artists, John Martin Gallery, London
- 1995 Royal Institute of Oil Painters Annual Exhibition, Mall Galleries, London
The Laing Art Exhibition, University Gallery, Newcastle upon Tyne
- 1994 Light Fantastic, nine artists, Walsall Museum and Art Gallery, West Midlands

AWARDS

- 1998 Gilchrist Fisher Memorial Prize
- 1998,1997 Finalist, Villiers David Prize
- 1996 The Journal Art Competition, University Gallery, Newcastle upon Tyne
- 1988-89 NYCC Art Centenary Award, York College of Art & Technology

DOCUMENTARIES

- 2004 Heist, Channel 4
- 1997 Date with an Artist, BBC2
- 1997 Don't Look Down, Scottish Television

ACKNOWLEDGEMENTS

Photo of the artist working in Hyde Park Corner: Dan Weill
Photo of the artist working in his studio: Juliet Kac
Thanks to the National Theatre